



DISCOVER
Aizkraukle
MUNICIPALITY!

TOURIST MAP

visitaizkraukle.lv

Aizkraukle MUNICIPALITY

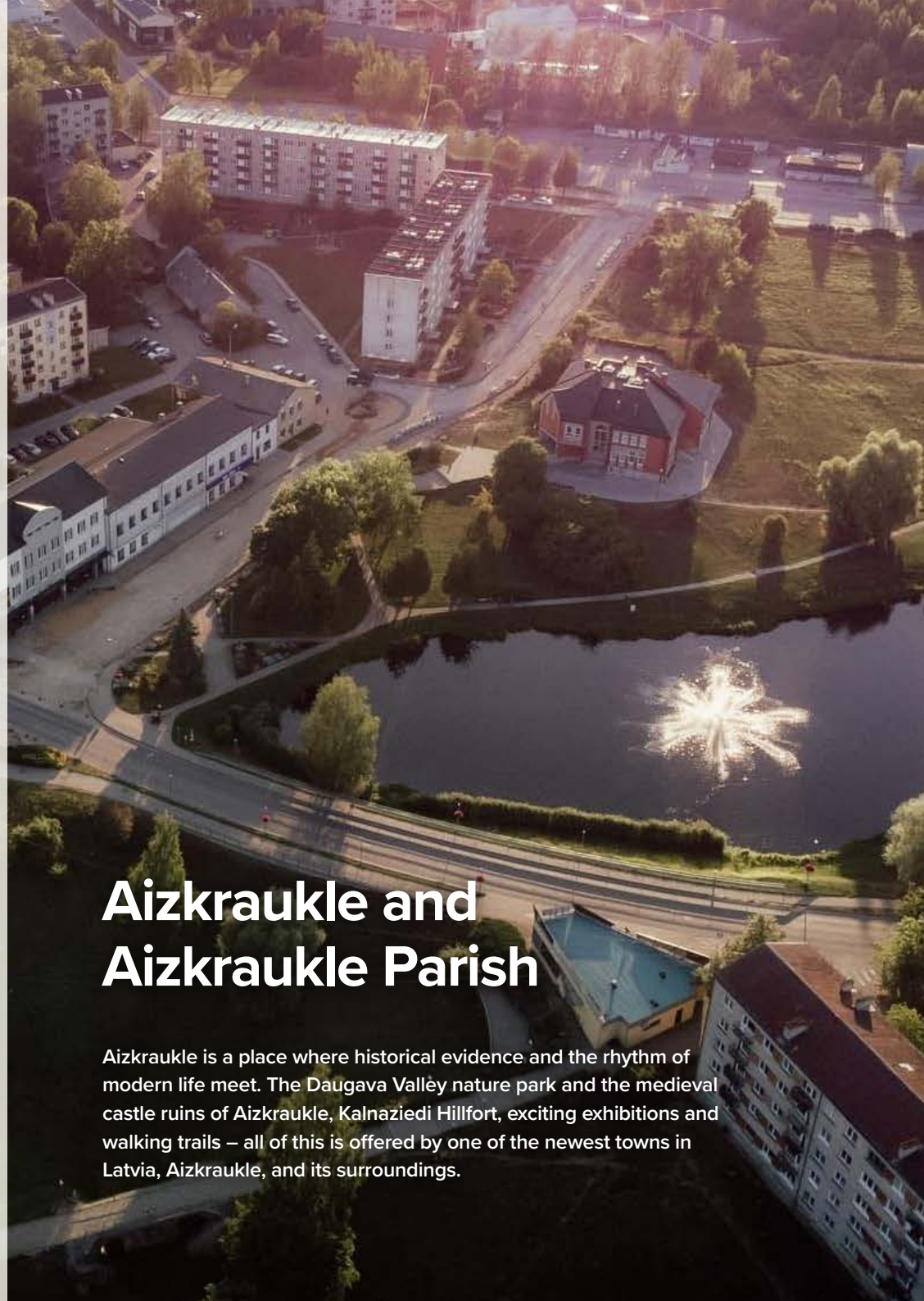
Three historical regions of Latvia – Vidzeme, Selonia and Latgale – meet in Aizkraukle Municipality, creating a diverse landscape rich in history, culture and nature. This wide and welcoming region invites every visitor to set out on a journey of discovery. Travel from the ancient Hanseatic town Koknese, with its impressive castle ruins and scenic views of the Daugava River, to Aizkraukle, a city where light is born in the waters of the Daugava. Continue to Pļaviņas, a town that inspires visitors to pause and write their own life stories, and to Skrīveri, known as the Green Land for its lush nature and peaceful surroundings. Explore Jaunjelgava, the historic gateway to Selonia, and discover the heart of Selonia in Nereta, where traditions, culture and warm hospitality await. Aizkraukle Municipality takes pride in its rich natural landscapes, remarkable cultural and historical heritage, and creative tourism experiences that offer something for every traveler.

**Set off on a journey and discover
Aizkraukle Municipality!**



Content

Aizkraukle and Aizkraukle Parish	3
Jaunjelgava Association	8
Koknese Association	14
Nereta Association	21
Pļaviņas Association	25
Skrīveri and Skrīveri Parish	30



Aizkraukle and Aizkraukle Parish

Aizkraukle is a place where historical evidence and the rhythm of modern life meet. The Daugava Valley nature park and the medieval castle ruins of Aizkraukle, Kalnaziedi Hillfort, exciting exhibitions and walking trails – all of this is offered by one of the newest towns in Latvia, Aizkraukle, and its surroundings.



1

Sightseeing

1 Aizkraukle History and Art Museum “Kalna Ziedi”. The museum actively organizes exhibitions on history, folk crafts and art. Visitors can view the permanent exhibition “Tales of the Daugava Riverbanks” and an exhibition of agricultural tools. Annual festivals, museum educational programs for students, traditional Latvian games, activities and events for families are organized. Campfire and tent sites are available.

📍 “Kalna Ziedi”, Aizkraukle
 📞 +371 65123351, +371 28305405
 🌐 www.aizkrauklesmuzejs.lv

2 “Kalna Ziedi” Castle Mound. The castle mound is located next to the “Kalna Ziedi” museum. It has been inhabited since the end of the 1st century BC, when Balts lived there. For centuries, the hill has plowed, so the original relief and the defensive ditches and ramparts that were built there have disappeared over time. The site was used as a refuge castle mound.

📍 “Kalna Ziedi”, Aizkraukle,
 GPS: 56.599735, 25.274021

3 Exhibition of Embroidered Icons. The exhibition displays the delicate and carefully crafted embroidered icons by Marija Majinovska from Aizkraukle. Advance booking required.

📍 16-54 Spīdolas Street, Aizkraukle
 📞 +371 22460073



4

4 Exhibition “Soviet Years”. Discover the most extensive exhibition in the Baltics dedicated to the cultural and historical heritage of the 1950s–1980s. Spanning three floors and covering 1,060 m², the exhibition offers an immersive insight into everyday life during the Soviet era—revealing how ideology shaped home life, work, leisure, education, and culture. Dedicated sections explore the history of the Pļaviņas Hydroelectric Power Station and the development of the town of Aizkraukle (formerly Stučka), adding local context to this compelling journey through time.

📍 20 Kalna Street, Aizkraukle Parish
 📞 +371 65123351, +371 28305405
 🌐 www.aizkrauklesmuzejs.lv/padomju-gadi/

5 Aizkraukle Medieval Castle Ruins. The ruins of the medieval castle of the order of Livonia are located on the banks of the Daugava River by the estuary of the river Karikste. For safety reasons, it is recommended to view the castle ruins from a distance. Private property.

📍 Aizkraukle Parish, GPS: 56.614361, 25.153423

6 Nature Park “Daugava Valley”. The park was established to preserve one of the most characteristic stretches of the Daugava River valley, where natural river terraces remained untouched by the construction of the Pļaviņas Hydroelectric Power Station. From the amphitheatre of the “Nature Concert Hall”, visitors can enjoy views of a striking geological monument—the dolomite quarry wall. The area is easily explored on foot, by bicycle, or by car, offering a variety of ways to experience its scenic landscape.

📍 Aizkraukle Parish, GPS: 56.5936, 25.2250

7 The Old Evangelical Lutheran Church of Aizkraukle. The church is an architectural monument of national significance. The stone church was built on its current site in 1680. It acquired its appearance from 1896–1899, based on a design by architect G. Kron, in accordance with the neo-Gothic trends that were in style at the time.

📞 Advance booking required. +371 26593956
 🌐 www.aizkrauklesbaznica.lv
 📍 Aizkraukle Church, Aizkraukle Parish
 GPS: 56.6184, 25.1453



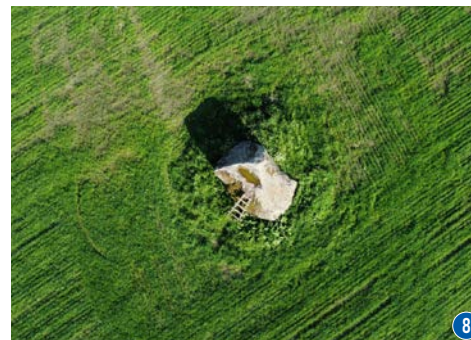
1



5 6

8 The Melķitāri Trough Stone. Since ancient times, this stone has been known by several names among the local people: the Mulda Stone, the Devil’s Stone, the Sacrificial Stone, the Holy Stone, and the Ancestral Shrine. In the past, various rituals were performed at this site. The water that collects in the hollow of the Mulda Stone was traditionally believed to have healing properties. Advance booking required +371 28372730 guided tours for groups of 10 or more people. Advance booking required +371 29497587 “Latvian christening and wedding ceremonies” led by the folklore group “Karikste”.

📍 Aizkraukle Parish, GPS 56.660217, 25.202755



8



Leisure Activities

9 Creative Workshop “Apdrukā pats”. Step into the workshop and discover the art of screen printing and block printing. Watch ideas come to life as unique prints and try it yourself—no prior experience needed. Creative kits for textile painting and printing are also available to enjoy at home. Advance booking required.

📍 11 Spīdolas Street
 📞 +371 29193796
 🌐 www.apdrukapats.lv

10 “Darbnīca.shop”. A variety of masterclasses take place in cozy, creative spaces, offering an inspiring environment to learn and create. Private sessions can be arranged at a time convenient for you. Workshops are available in Latvian, English, Lithuanian, and Italian. Visitors can also purchase locally made crafts and unique souvenirs.

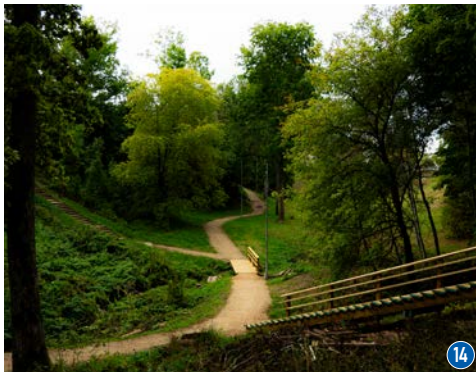
📍 2 Bērzu Street, Aizkraukle
 📞 +371 29828515, +371 29810687

11 Tennis Club “Vilar”. Opportunity to play tennis at both professional and amateur levels, train independently or participate in competitions. Tennis courts, a stadium, an arena and an event venue are available.

📍 20 Gaismas Street, Aizkraukle
 📞 +371 25626060
 🌐 www.vilartenisaklubs.lv



11



12 Aizkraukle Municipality Sports Centre. The Sports Centre offers a wide range of outdoor and indoor sports activities. During the winter, weather permitting, the sports centre offers cross-country skiing opportunities of varying difficulty.

- 📍 21 Lāčplēša street, Aizkraukle
- ☎ +371 26182772, +371 29378143
- 🌐 www.aizkrauklessportacentrs.lv

13 Aizkraukle Multifunctional Bicycle Park and Daugava Walking and Nature Trail. Covering over 9,000 square meters, the bike park is the perfect place to get moving: to ride the track, perform tricks, or enjoy some active free time outdoors. The park features a pump track, a skate park, and a scenic walking trail for every kind of adventurer.

- 📍 Vecmaurēni-1 (opposite Aizkraukle Municipality Secondary School), Aizkraukle,
- GPS: 56.599174, 25.261112

14 Aizkraukle Walking Trail “Daugavas takas”. Aizkraukle walking trail leads through picturesque terrain. The trail features benches, stairs, footbridges, and a viewing platform that allows visitors to enjoy the Daugava River landscape.

- 📍 5 Draudzības Krastmala, Aizkraukle



15 Electric Scooters, Electric Bicycles, and Bicycle Rentals. The service is offered by the “Vilar Hotel”.

- 📍 20B Gaismas Street, Aizkraukle
- ☎ +371 25626060
- 🌐 www.vilarhotel.lv

16 Children’s Playroom “Bumerangs”. Children are welcome in the playroom. Separate play areas for children up to 3 years old, a mini golf room and an area for older children with a ball pool, slide and various mazes covering an area of 90 square meters. Rooms can be reserved for children’s parties.

- 📍 20A Gaismas Street, Aizkraukle
- ☎ +371 25574741

17 Witches’ Airfield and Old Lime Kiln. Join the witch on an excursion programme at the “Cepļi” home. You can see an old lime kiln, as well as fish, algae and snail fossils, and the rich flora and fauna of the area. It is also a popular wedding stop and ceremony location. Advance booking required.

- 📍 “Cepļi”, Aizkraukle Parish
- ☎ +371 28372730

18 Stories and Legends of Aizkraukle Manor in Nature Park “Daugava Valley”. Step into a world where history, legend, and nature intertwine. The visit reveals the stories and timeless myths of Aizkraukle Manor, alongside the rich cultural and historical heritage of the “Daugava Valley” Nature Park.

- 📍 Advance booking required +371 29429195



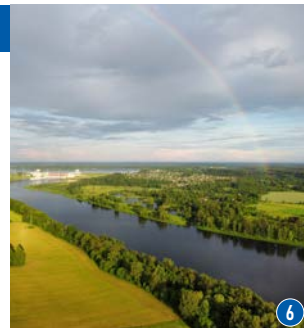
Tourism information point recommends:

- Get to know the sculptures in the urban environment of Aizkraukle, which were placed in the city centre during the 1988 “Art Days”, by scanning the QR codes located next to them.
- Learn about the history of Aizkraukle, the geology of the Daugava Valley, and its natural values by listening to the audio guides:

• “From Ancient Ascheraden to Modern Aizkraukle”



• “The geology and treasures of the Daugava Valley today”



• “The origins of the Daugava and the Aizkraukle waterway”



Catering



Café “Betija”. 14A Lāčplēša Street, Aizkraukle, +371 26317562, www.betija.lv

Café “Krasta Krogs”. 2 Spīdolas Street, Aizkraukle, +371 265121406, +371 28216244

Café “Romantika”. 3 Ozolu Street, Aizkraukle, +371 26414944

Café “Solo”. 14A Spīdolas Street, Aizkraukle, +371 20039758, www.vejkalni.lv

Café – Bistro “Panna”. 4 Spīdolas Street, Aizkraukle, +371 26398193

Café – Bistro “Pasēdņīca”. 28A Jaunceltnes Street, Aizkraukle, +371 25641601

Café – Bar “Jumprava” (Takeaway). 20A Gaismas Street, Aizkraukle, +371 22494451

Canteen of Aizkraukle Vocational Secondary School. 21 Jaunceltnes Street, Aizkraukle, +371 26529932

Greenpoint Café – Bar. 14C Gaismas Street, Aizkraukle, +371 26474460

KWB Street food restaurant. 8 Skolas Street, Aizkraukle, +371 22444455, www.kwb.lv

Pastry Shop “Melānija”. 6 Gaismas Street, Aizkraukle. +371 26193793 (pastry shop), +371 24203292 (Sushi), www.melanija.lv

Pizzeria “Lokals”. 4 Gaismas Street, Aizkraukle, +371 22103034, www.lokals.lv

Restaurant “Vilar Hotel” 20b Gaismas Street, Aizkraukle, +371 25642419, www.vilarhotel.lv/restaurant

Accommodation



Aizkraukle Penthouse Apartments. 16 Spīdolas Street, Aizkraukle, + 371 29442747

Apartaments “Pērse”. 6 Lāčplēša Street, 4th floor, Aizkraukle, +371 29123614

Guest House “Valteri”. “Padomi”, Aizkraukle Parish, +371 26161062, +371 26182772, www.atputavalteros.lv

Holiday House “Cepļi”. “Cepļi”, Aizkraukle Parish, +371 29777863

Holiday House “Kraustos”. “Senči”, Aizkraukle Parish, +371 29210892, www.kraustos.lv

Holiday House “Lejas Bitēni”. “Lejas Bitēni”, Aizkraukle Parish, +371 29268119, +371 29363048

Holiday House “Pakalni”. “Pakalni”, Aizkraukle Parish, +371 26584304

Hostel “Avēnija”. 18 Nomales Street, Aizkraukle, +371 22004468

Hostel of Aizkraukle Vocational Secondary School. 14 Bērzu Street, Aizkraukle, +371 65133704

Hotel “Vilar Hotel”. 22b Gaismas Street, Aizkraukle, +371 25626060, www.vilarhotel.lv



Aizkraukle Tourism Information Point



Provides information about tourism opportunities in Aizkraukle, the parish, the municipality and the regions of Latvia. Souvenirs with symbols of the city and municipality are available for purchase.

- 📍 4 Lāčplēša Street, Aizkraukle
- ☎ +371 25727419
- 🌐 www.visitaizkraukle.lv
- 📍 Visit Aizkraukles novads
- 📍 Visit Aizkraukles novads
- 📍 Visit Aizkraukles novads



Jaunjelgava Association

The picturesque locations of the Jaunjelgava Association – Jaunjelgava, Sērene, Sece, Staburags, Sunākste, and Daudzeva – shine on the banks of the Daugava River like six rays of light, inviting visitors to experience the diverse and heartfelt Selonia region – discovering natural landscapes, quiet forest trails, cultural and historical sites, ancient relics, stories, and hospitable people. Here, visitors can feel both the historical atmosphere and the rhythm of modern life, which coexist and naturally complement each other.

Sightseeing

19 The Historic Centre of Jaunjelgava. A nationally significant 17th–19th century urban monument where the past meets the present. The Historic Centre of the city features three churches of different denominations: the Orthodox Church of Christ's Enlightenment, the Roman Catholic Church of the Holy Cross, and the Baptist Church, as well as a stele dedicated to the heroes of the War of Independence and a monument to Minister Teodors Hermanovskis. Advance booking required for guided tours.

📍 Jaunjelgava, GPS: 56.617348, 25.081736

☎ +371 27366222

20 Pēteris Graudulis Museum “Daiļamatnieka sēta” (Artisan’s Yard). A small museum displaying the woodcarver’s works created over more than 40 years and his workshop. For his outstanding achievements, the sculptor has received the Order of the Three Stars, 5th Class award. The museum is open during the tourist season and admission is by donation. Advance booking required.

📍 14 Jelgava Street, Jaunjelgava

☎ +371 27597747, +371 2160677

21 Jaunjelgava Promenade. A scenic walking trail along the Daugava River (~2 km) with children’s playgrounds, rest areas, bonfire areas and a parking lot. The paved trail is suitable for rollerblading and cycling, and stairs lead down to the banks of the Daugava River.

📍 Jaunjelgava, GPS: 56.620621, 25.088406

22 Jaunjelgava Jewish Cemetery. One of the best-maintained Jewish memorials in Latvia, where more than 500 Jews were reburied from murder sites outside Jaunjelgava in the early post-war years. This cemetery has existed since 1848 and covers an area of two hectares, with a total of more than 2,000 burials.

📍 12 Meža Street, Jaunjelgava



23 The Chimney of Sērene Manor. The chimney was built in the 18th century and belonged to the former Sērene Manor building, which has not survived to this day. Chimneys of this type are mostly found in Kurzeme and Zemgale, as well as in historic Selonia. This is one of the few preserved examples in this area.

📍 Sērene Parish, GPS: 56.58403, 25.188951

24 Pagrabkalni Inland Dune. The highest inland or aeolian dunes of Latvia in the Taurkalne forest. Although this place is located more than 100 km from the sea, the relief surprises its pronounced coastal forms. The highest peak reaches 95 m. An excellent place for unusual photos – the dune surrounded by forest.

📍 Daudzese Parish, GPS: 56.529324, 25.090998

25 Aklais (Jūgu) Bog. The 2003-hectare nature reserve features a two-kilometer boardwalk trail that showcases scenic raised-bog landscapes, from open bog areas with characteristic lakes to forest-enclosed vistas. Rest areas and information boards provide insights into the local plants, berries, birds, and fish.

📍 Daudzese Parish, GPS: 56.505764, 25.118254





30 Sece Evangelical Lutheran Church and Friedrich Mälbergs' Resting Place. The Neo-Gothic stone and brick longitudinal church with 300 seats was built in 1792, and a tower was added in 1862. The poet and teacher Friedrich Mälbergs (1823–1907) and German soldiers who fell in World War I are buried in the cemetery next to the church. Services are held on the fourth Sunday of each month. Advance booking required for tours.

📍 Sece Parish, GPS: 56.557800, 25.380699
 📞 +371 22431941
 🌐 www.secesbaznica.weebly.com.

31 Struve Geodetic Arc Point "Bristen". The Struve Geodetic Arc is a unique system of geodetic measurements, the longest and most accurate of its time, and an outstanding testimony to the scientific, historical and technical developments of its era. In 2005, it was included in the UNESCO World Heritage List. Sece is home to the "Bristen" arc point, an important element of the historical measurement system, where the original marker can be viewed on site.

📍 Sece Parish, GPS: 56.5812785, 25.359550



26 "Ellīte" Sulfuric Spring. The sulfur spring flowing out of Ellīte Bog is popular for its distinctive water smell and its reputed healing properties. A trail, a water collection point, a recreation area, and information boards have been set up for visitors. This is one of the ancient sacred sites of our ancestors, where a quiet and respectful attitude is required.

📍 Daudzese Parish, GPS: 56.485500, 25.257601

27 The Memorial Sign Dedicated to G.F. Stender and Siberian Crosses. In the center of Sunākste, you can see a memorial sign dedicated to Old Stender, unveiled in 2014, which commemorates the 300th anniversary of his birth. Also on display is the wooden sculpture "Siberian Crosses" by the exiled artist Zigfrīds Sapietis, a tribute to Latvians who endured the unwanted war and the horrors that followed. Heading toward Viesīte, you can visit the Sunākste Stender Evangelical Lutheran Church, the environmental art installation "Gate of Light" on the site of the former Stender parsonage and enjoy a walk along the Stender "Picture Alphabet" trail.

📍 Sunākste Parish, GPS: 56.45849, 25.48067

28 Staburags Memorial Site. Shrouded in legends and stories told by rafters, Staburags was an 18.5 m high sandstone cliff on the left bank of the Daugava canyon. Since 1965, it is covered by the waters of the Pļaviņas HPP reservoir. In the Unity Grove in Vīgante, you can see a memorial sign dedicated to Staburags, called "Dieva auss" (God's Ear). It is surrounded by a daylily garden and oak trees planted by the presidents of Latvia.

📍 Staburags Parish, GPS: 56.579373, 25.481600

29 Vīgante Park and Outdoor Stage. In the shade of ancient trees, you can meet the children of Staburags, Jancis and Marčs, see the characters from the legend "How the Animals Dug the Daugava" and listen to its audio version. The trail leads to the sculpture "Daina" on the banks of the Daugava. Stop by Pēteris Barisons' gazebo to learn about the composer's life and work, the Song Festival tradition, and listen to his compositions. The Staburags Community Centre hosts temporary exhibitions.

📍 Vīgante Park, Staburags Parish, GPS: 56.574359, 25.497248
 📞 +371 29892925



Leisure Activities

32 Water Tourism Centre "Balta Kaza". The offer includes ferry services from Skrīveri to Jaunjelgava, as well as excursions and boat trips on the "Balta Kaza". The Water Tourism Centre rental point provides tourism equipment such as canoes, kayaks, rowboats, a motorboat (5 hp engine), a recreational raft (for 6 people), a large raft, SUP boards, a catamaran, and bicycles. There are available recreation and camping areas, an educational and adventure-filled trail for schoolchildren, and a boat launch site – SLIP. Advance booking required for excursions and equipment.

📍 Pier in Jaunjelgava: 1 Pārceltuve Street, Jaunjelgava
 📞 +371 29442587

33 Concert Dome "Koncertkupols". Set on the scenic banks of the Daugava River, the Concert Dome offers a truly unique cultural experience – music and atmosphere come together in perfect harmony. This intimate venue invites musicians to explore improvisation while audiences become part of the performance itself. With seating for up to 70 guests, the dome creates a warm and festive ambiance, enhanced by a diverse programme of around 40 seasonal concerts spanning a variety of genres. The covered structure ensures comfort in all weather conditions, while on sunny days, a spacious outdoor terrace is open to the surrounding landscape. The Concert Dome is also available for private events, making it an ideal setting for celebrations, gatherings, and special occasions in an inspiring riverside location.

📍 "Ceriņi", Jaunjelgava
 📞 +371 25678898
 🌐 www.koncertkupols.lv



34 Asphalt Bike Track. The 235-meter-long multi-functional pump track is filled with various elements and large turns. The track is suitable for both children and adults. The track accommodates mountain and city bikes, BMX bikes, longboards, roller skates, skateboards, and scooters, offering a dynamic space for creative expression.

📍 2 Pļavu Street, Jaunjelgava

35 Black Reduced Ceramic Kiln “Velniņš”. By burning traditional wood for more than 8 hours, reaching a temperature of over 1000°C in a special process, black-smoked clay dishes are made with special “Velniņš” characteristic shape, appearance, pattern and smoked tone. Advance booking required for master classes and excursions during the tourist season. Mobile masterclasses are offered during the winter season.

📍 “Velniņi”, Daudzeva, Daudzese Parish
📞 +371 29784413, +371 29352377

36 Black Reduced Ceramic Kiln “Bānītis”. Handmade and filled with love, black ceramic dishes fired in a kiln acquire the characteristic style of the owners of “Bānītis”. The kiln produces a wide range of dishes with a special dark tone – from gray green to silvery black, from cups to bread baking dishes. Advance booking required for tours and master classes during the tourist season.

📍 “Zvirbuļi”, Daudzeva, Daudzese Parish
📞 +371 29449611, +371 29449592

37 “ZaigaArt”. The brand offers embroidered leather accessories and textiles – large and small shoulder bags, hip bags, bracelets, belts and necklaces. Natural leather combined with fabric and folk-style embroidery creates a unique style. Advance booking required for workshop tours, which are limited to small groups (3–4 people at a time).

📍 12-“Ličupes”, Daudzeva, Daudzese Parish
📞 +371 25602920

38 “Lances` stables”. The family business offers unforgettable experiences with horses, including



37

riding in paddocks in the surrounding area, carriage rides in summer, and sleigh and toboggan rides in winter. Available all season. Advance booking required for school and family excursions, photo shoots, and horse escorts for events.

📍 “Zaļmežnieki”, Sunākste Parish
📞 +371 25931109

39 The Boat “Sēlis”. The trimaran-type boat with 36 seats offers excursions along the Daugava River in the Pļaviņas HPP Reservoir from the Vīgante Park pier. The boat is suitable for entertainment events and celebrations. Advance booking required to choose from different routes.

📍 Vīgante Park, Staburags Parish
📞 +371 28490667
🌐 www.daugavaskugi.lv

40 Camping and Recreation Area on the Banks

of the Daugava River “Vīgante Park”. A place to relax and enjoy the picturesque banks of the Daugava River. The area has a campfire site, picnic tables and benches, a public swimming area, tent sites, and six wooden shelters for comfortable relaxation in any weather.

📍 Vīgante park, Staburags Parish
📞 +371 29892925

41 Farm “Gundegas”. A recreation area on the banks of the Daugava River with tent sites, a gazebo, a campfire site, a barbecue, and a place to launch boats or another watercraft into the Daugava. SUP board and boat rentals are available. The farm also grows flowers and vegetable seedlings and offers master classes. Advance booking required.

📍 “Gundegas”, Bitāni, Sece Parish
📞 +371 20233637, +371 25580244

Accommodation

Camping “Laimeskalni”.

“Laimeskalni”, Sece Parish, +371 26119479, www.laimeskalni.lv

Camping “Miera Vējš”.

“Balseri-2”, Daudzese Parish, +371 26046258, www.mieravejs.lv

Camping Site by the Daugava River “Ceriņi”.

“Ceriņi”, Jaunjelgava, +371 25678898, www.kempingspiedaugavas.com

Country house “Dobelnieki”.

“Dobelnieki”, Sece Parish, +371 26765737

Guest House “Iecavnieki”.

“Iecavnieki”, Sērene parish., +371 26334498, +371 26182977

Guest House “Pie Zandarta”.

“Krasti”, Staburags Parish, +371 29216067

Guest House “Rats”.

“Rati”, Daudzese Parish, +371 29114886, +371 29464137, www.viesunamsrats.lv

Holiday Home “Daugavas Vītoli”.

1 Daugavkrastmalas No. 3, Jaunjelgava, +371 29592009

Holiday Home “Piešupīte”.

“Piešupīte”, Staburags Parish, +371 29490300

Recreation Complex “Lapsu Ciems”.

“Piparkalni”, Sece Parish, +371 29326827, +371 29181195, www.lapsuciems.lv

Sauna “Radzes”.

“Radzes”, Sece Parish, +371 26908813

Catering



Café “Citrušs”. 1 Uzvaras Street, Jaunjelgava, +371 65152305, +371 26432466

Café “Pie Aigara”.

69 Jelgavas Street, Jaunjelgava, +371 29478709

Café “Rudais Ūsiņš”.

“Tiltņieki 1”, Sērene Parish, +371 29209184

Shop/Pizzeria “Lauva”. (During the summer season).

27 Jelgavas Street, Jaunjelgava, +371 26517226



Jaunjelgava Tourism Information Point



Provides information about tourism opportunities in Jaunjelgava and Jaunjelgava Association, Aizkraukle Municipality and other regions of Latvia. You can buy souvenirs and local crafts and sign up for guided tours of Jaunjelgava. The Tourism Information Centre reveals the unique story of Jaunjelgava. The small exhibition hall hosts temporary exhibitions. A digital display provides an insight into the lost landscapes of the Daugava River, complemented by a narration by a tourism specialist. Copying and printing services are available. Tourism information is available 24 hours a day on the digital outdoor display.

📍 33 Jelgavas Street, Jaunjelgava
📞 +371 27366222
🌐 www.visitaizkraukle.lv
📍 Jaunjelgavas TIP
📍 jaunjelgavas_tip



32



Koknese Association

In Koknese, the Daugava River weaves together the stories of the past and present. The impressive medieval ruins of Koknese Castle reflect the grandeur of a former Hanseatic town, while the Garden of Destiny offers a unique space for reflection and inspiration. Like three shining pearls in one ring, the parishes of Koknese, Bebrī, and Irši will captivate you with their distinct character and natural beauty.



43

Sightseeing

42 Koknese Medieval Castle Ruins. Built in the 13th century on a high hill near the confluence of the Daugava and Pērse Rivers, the castle stood until 1701. Today, the impressive castle ruins are surrounded by the waters of the Pļaviņas Hydroelectric Power Station. It is possible to see a historical exhibition, a torture chamber, the site of a former well, and ancient cobblestone pavement. An audio guide about the history of the castle, coin minting, souvenirs, wedding ceremonies, excursion programs, and escape from the torture chamber are available. Admission fee from April till October.

📍 Koknese Park, Koknese
☎ +371 29275412, +371 65161296

43 The Garden of Destiny. The Garden of Destiny is a symbol created in nature. It represents the constant renewal and growth of the nation – a place where the past, present, and future of both the people and the country meet. The Garden of Destiny combines outstanding environmental architecture with the natural beauty of the Koknese Peninsula and the flow of the Daugava River.

📍 Garden of Destiny, Koknese Parish
☎ +371 25495544
🌐 www.liktendarzs.lv

44 Koknese Park. The replica of the Pērse waterfall rustles in the park pond and close to it the fountain “Faun’s Head” provides refreshment. The park features wooden sculptures, the memorial stone “Pērse Girl”, cannons and ring crosses from the Swedish era, the ruins of the New Castle, the Devil’s Cellar, a tea house – gazebo, an obstacle

course, and other objects. In the evenings, the park is illuminated by lanterns.

📍 Koknese Park, Koknese
☎ +371 29275412, +371 65161296

45 Koknese Nature Trail. Nature lovers can walk along a naturally formed trail with wooden bridges over ravines and Daugava River bends. The route can be started at various locations. The total length of the trail is 5.65 km.

📍 1 Blaumaņa Street, Koknese
☎ +371 29275412, +371 65161296



44

46 Koknese Manor Complex. The Koknese Manor Complex consists of the manor manager's house and the barn with a central red-brick arch, now also the home to the pub "Rudolfs". The Latvian writer Rudolfs Blaumanis lived here from 1885 to 1887 while studying manor management. The buildings are currently used by Vidusdaugava Forestry. The garden is open to visitors.

📍 3 Blaumaņa Street, Koknese

47 Koknese Evangelical Lutheran Church. The church was built in 1687. Ernst Johann Glik, translator of the Latvian Bible, served as pastor here. A large cast iron bell can be seen in the church tower. The interior is decorated with paintings by Aldis Dobenbergs. A memorial stele dedicated to the holders of the Order of Lāčplēsis is located next to the church.

📍 1 Blaumaņa Street, Koknese
☎ +371 22831007

48 Pastmuīža Devil's Stone. This is one of the most widely known mythological stones in Latvia. The stone consists of two parts: the larger part is 3.5 m long, 3.1 m wide, and 0.9–1.9 m high. The Pastmuīža Devil's Stone is located on the side of the old Rīga–Daugavpils highway, near the campsite "Senči".

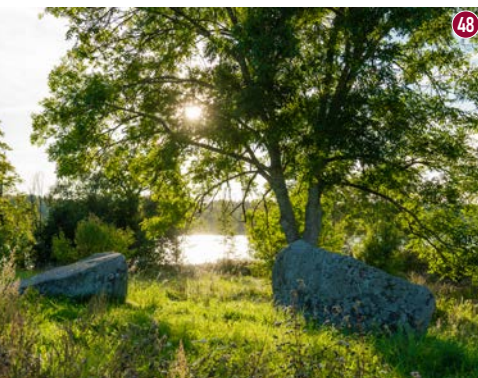
📍 GPS: 56.626484, 25.455646

49 Motorcycle Workshop "Rūsa un Rozīnes". Accompanied by the hosts, you can view the works of steam punk designer Normunds Bite and portraits by photographer Māris Ločmelis in the workshop.

📍 Bilstiņi, Koknese Parish
☎ +371 29259572



48



49



46



47

50 Latvian Beekeeping History Museum. The museum exhibition provides information about the life of a bee colony, the food source of bees, beekeeping products, and their significance. It introduces the founders and teachers of the Vecbebrei Beekeeping School. Old beekeeping tools, hives, and equipment are on display. Honey tasting with bread and milk can be ordered. Honey is available for purchase.

📍 "Dravas", Vecbebrei, Bebri Parish
☎ +371 26137084

51 Vecbebrei Manor Complex. Vecbebrei Manor House was built in the first half of the 19th century and rebuilt in 1907 after being burned down. During the renovation of the Manor House, a risalit was added, which is an expressive example of Art Nouveau architecture. Two German baron families lived in the manor house: the Barons von Wilken and the Barons von Meyendorff. The manor can only be viewed from the outside, and there are information stands in the manor park.

📍 Vecbebrei Manor, Vecbebrei, Bebri Parish
🌐 www.vecbebrei.lv

52 Sculptor Voldemars Jākobsons' memorial home. The former sculptor's residence displays his works, while everyday objects and furniture, a collection of shoes, a small library, and photographs tell the story of his life. The memorial house is open to visitors from 1 May to 30 September.

📍 "Galdiņi", Vecbebrei, Bebri Parish
☎ +371 29903892

53 Jaunbebrei Potato Rebellion Site. Close to the ruins of Jaunbebrei Manor, the remains of a red barn and the legendary Punishment Pine invite visitors to explore their stories. These are the truest witnesses to the 1841 Potato Rebellion, the farmers' uprising against the nobility, considered the first sign of Latvia's national awakening.

📍 Bebri Parish, GPS: 56.739905, 25.602784

54 Irši Manor Barn – the Magazine. The Magazine is a typologically striking example of Vidzeme manor architecture from the late Classicism period in the first half of the 19th century. The building has the features of a masonry barn from that period with an open arched roof. The building was renovated in 2022. The warehouse houses an exhibition on the history of Irši and Hirschenhof colony, temporary exhibitions, and various events.

📍 "Magazīna", Irši, Irši Parish
☎ +371 29275412

55 Hirschenhof Garden. You can admire the diversity of flowers and plants, well-kept ponds and water cascades, stones and millstone paths, and enjoy romantic landscapes. Safari trips in the deer garden are also available.

📍 "Dzelmes", Irši Parish
☎ +371 20948375



54



55



46

Leisure Activities

56 Koknese Sports Centre. Koknese Sports Centre features a modern swimming pool with two swimming areas, a jacuzzi, sauna and steam bath, a spacious sports hall, gym, stadium, beach volleyball, and basketball courts, skate park, and multi-functional sports field.

📍 27A Parka Street, Koknese
☎ +371 65161790
🌐 www.koknesessportacentrs.lv

57 Organic Farm "Janavas". Tourist groups can enjoy herbal tea tastings in a unique environment and learn about the organic, preservative-free face cream "Beāte." Visitors can also take a walk along the nature trail and explore the wild and medicinal plants found in the area.

📍 "Janavas", Koknese Parish
☎ +371 25994160
🌐 www.janavas.lv

58 The Creative House. At the Creative House, you can learn traditional games, songs, dances, and essential skills from various trades, as well as enjoy Latvia's culinary heritage. The activities vary according to the seasonal festivals held each month. These events are organized regularly, and everyone interested is welcome to participate.

📍 1A Melioratoru Street, Koknese
☎ +371 26575499



57

17

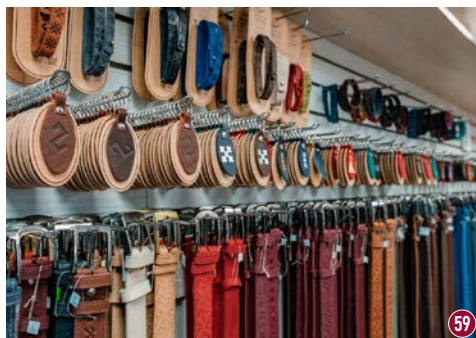
59 Craft Centre “Dunense”. Workshop offers creative master classes for groups of up to 50 visitors. Under the guidance of masters, you can learn about artistic leatherworking and make a small leather souvenir for yourself. The workshop accepts orders for leather products and invites to visit the leather accessories shop, where you can purchase products made in the workshop.

📍 7 1905 Gada Street, Koknese – workshop and shop

📍 4 Lakstīgalu Street, Koknese – creative master classes (for schoolchildren and adults, groups of 20 people or more)

☎ +371 29227936.

🌐 www.dunense.com



59

60 Cornelius and “Olalā!”. In the village of Bilstiņi, the Olalā! delicatessen offers its signature crème brûlée made from quail eggs, housed in a former peat barn known as “Cornelius.”

📍 “Rīta putni”, Bilstiņi, Koknese Parish

☎ +371 29216693

61 Electric Vehicle Rental in The Garden of Destiny. Riding an electric vehicle is a fun way to visit beautiful places in the Garden of Destiny in an environmentally friendly manner. It is a convenient means of transportation for those who cannot or do not want to travel long distances on foot. The speed of these vehicles is 15–20 km/h.

📍 Garden of Destiny, Koknese Parish

☎ +371 26022919

🌐 www.impresso.lv



63

62 “Cornflower Healing House”. Offers small groups an introduction to the world of cards, the aromas of shamanic waters, and moments that step beyond ordinary time and space – a journey into the realm of magic. The experience also includes a “journey within,” combining massage, herbal healing, and sound instruments for a uniquely restorative encounter.

📍 12 Vērene Street, Koknese

☎ +371 26573963

63 SPA Koknese. An authentic, private country SPA, where time becomes a priority, peace comes from the presence of nature, warmth, and human care. Enjoy the sauna, steam bath, professional massages, bubble bath, cozy fireplace atmosphere, and special women’s sauna evenings.

📍 “Rozes”, Bilstiņi, Koknese Parish

☎ +371 27706000

🌐 www.divasupes.com/spakoknese

64 Viking Boat “Nameisis”. The Viking-style boat offers trips with the captain’s narration along the route: Koknese Castle Ruins – Pērse River – the Garden of Destiny – Koknese Castle Ruins. The boat offers 19 seats.

📍 Koknese Medieval Castle Ruins Boat Pier

☎ +371 26161131

65 Boats “Vigante” and “Sēlis”. Trips along the Pērse and Daugava Rivers are available, accompanied by stories from the captain. The boat “Vigante” offers 26 seats, while “Sēlis” accommodates up to 36 passengers. For larger groups, both boats together can host up to 60 guests.

📍 Koknese Medieval Castle Ruins Boat Pier

☎ +371 28490667

🌐 www.daugavaskugi.lv

66 Boat “Gulbis”. Tours depart from The Garden of Destiny, revealing the history of Koknese, the garden’s creation, and Daugava River stories through an audio guide. The boat offers 20 seats.

📍 The Garden of Destiny Boat Pier

☎ +371 29999436

🌐 www.kugitisingulbis.lv

67 “Wake Surf Latvia”. “Wake Surf Latvia” offers wakesurfing, wakeboarding, rides on an inflatable tube, and other water entertainment in Koknese.

📍 Koknese

☎ +371 22030132

68 Camping “Kārķļu Osta”. Boat and motorboat rental (2.5 hp and 5 hp), SUP rental, and 6-person cutter tours on the Daugava River. The campsite includes tent areas, fire pits, football and volleyball courts, table tennis, and novuss.

📍 “Kārķļu Osta”, Koknese Parish

☎ +371 26165322

🌐 www.karkluosta.com

69 Koknese Medieval Castle Ruins Pier. Boat trips on the Daugava and Pērse rivers during the summer season.

📍 Koknese Medieval Castle Ruins Boat Pier

70 “Daugavas Kuģi”. Water adventures using inflatable tubes, water skis, and wakeboards. Motorboat trips are available.

☎ +371 28490667

🌐 www.daugavaskugi.lv

71 Camping “Pērses Notis”. Motorboat rental with a captain, inflatable tube rides, and fishing opportunities.

📍 Koknese Parish, GPS: 56.64584, 25.40341

☎ +371 26267000

72 Recreation Base “Garauši – Vecbordzēni”. Rental of 7 different boats for recreation and fishing on Lake Lobe.

📍 “Vecbordzēni”, Koknese Parish

☎ +371 26567971

73 “Lielkalni R”. “Lielkalni R” offers enduro tracks, motorcycle rental, camping sites, Jeep Gladiator rides, SUP boards, sea kayak, 3-person canoe, inflatable boats with optional motors, and the “Sajūtu šķūnis” event barn.

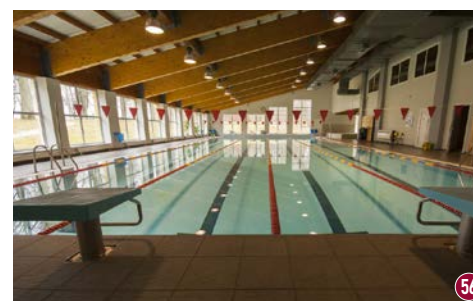
📍 “Rosmes”, Bebri Parish

☎ +371 26246830

74 Recreation Base “Skābarži”. Rental of 15 row-boats, electric motors, and pedal boats.

📍 “Skābarži”, Bebri Parish

☎ +371 29159137



56



66

Catering



Bar–Café “Jumprava” (Takeaway).

22 Parka Street, Koknese, +371 27877032

Café “Tandēms”.

8B 1905 Gada Street, Koknese, +371 23271816

Catering “Ēdam gardi!” (During the summer season). Koknese Medieval Castle Ruins, Koknese, +371 26882884

“Lāciši” (Takeaway, pre-order).

“Lāciši”, Bebri, Bebri Parish, +371 28326531

Restaurant “Divas upes”.

“Rozes”, Bilstiņi, Koknese Parish, +371 27706000, www.galdins.lv

Tavern “Rūdolfs”.

3 Blaumaņa Street, Koknese, +371 26514096



Tourism information centre recommends



- Discover Koknese lost landscapes through digital solutions by scanning QR codes in five locations in the park and surrounding area.

• Audio guide:

• Discover Bebri and Irši parishes



Accommodation



Accommodation “Lāčīši”.

“Lāčīši”, Vecbebri, Bebri Parish, +371 28326531

Apartment at Parka Street 16.

16 Parka Street, Koknese +371 25337122

Bathroom “Bebri pirts”.

“Ozoliņi”, Vecbebri, Bebri Parish, +371 29293877

Bathroom “Zutiņa pirts”.

“Svampēni”, Koknese Parish, +371 26380142

Camping “Daugavas Radzes”.

“Radzes”, Koknese Parish, +371 29284622

Camping “Kārķļu Osta”.

“Kārķļu Osta”, Koknese Parish, +371 26165322,
www.karkluosta.com

Camping “Pērses Notis”.

Koknese Parish, +371 26267000,
GPS: 56.64584, 25.40341

Camping “Senci”.

103.5 km Riga–Daugavpils
Highway, Koknese Parish, +371 25227262

Glamping Cabin at Z/S “Janavas”.

“Janavas”, Koknese Parish, +371 25994160,
www.janavas.lv

Glamping “Ragnar Glamp Koknese”.

“Jaunbilstiņi”, Bilstiņi, Koknese Parish,
+371 29578899,www.ragnarglamp.com

Guest House “Divas Upes”.

“Rozes”, Bilstiņi, Koknese Parish, +371 27706000,
www.divasupes.com

Guest Room “Kazenes”.

“Kazenes”, Koknese Parish, +371 28689257

Guest House “Kūpiņšala”.

“Rijnieki-1”, Koknese,
Koknese Parish, +371 27553304, www.kupinsala.lv

Guest House “Mazā Kāpa”.

4 Lakstīgalu Street, Koknese, +371 27183284

Holiday Home “Ciemiņos”.

“Kalniņi”, Bebri Parish, +371 25434818,
www.cieminos.lv

Holiday Home “Pērses Krasts”.

17 Daugava Street, Koknese, +371 29435631

Holiday Home “Rijnieku Upes Namiņš”.

“Rijnieki”, Koknese Parish, +371 28105055

Holiday Home “Sidrabi”.

“Sidrabi”, Koknese Parish, +371 26593210

Holiday Home “Smiltērķšu Namiņš”.

“Eģīši”, Irši Parish, +371 28365877,
www.justbio.lv



Motel “Astarte”.

14A 1905 Gada Street, Koknese, +371 65161994

Motel on Paugu Street 18.

18 Paugu Street, Koknese, +371 29268431

Recreation Complex “Kalnavoti”.

“Kalnavoti”, Koknese Parish, +371 29357420,
www.kalnavoti.lv

Recreation Complex “Rančo Randevu”.

“Riekstukalni 1”, Koknese Parish, +371 29295900,
www.ranchorandevu.lv

Vecbebri Technical School Dormitory.

Vecbebri, Bebri Parish, +371 26593960

Aizkraukle Municipality and Koknese Tourism Information Centre



Provides information about tourism opportunities in Koknese town, Koknese Association, Aizkraukle Municipality, and regions of Latvia. Souvenirs and locally made products are available for purchase. Visitors can see models of The Garden of Destiny and Koknese Medieval Castle, as well as changing exhibitions. Digital stands offer insights into the history of Koknese and its surroundings, supplemented by stories from tourism specialists. Available services: Free WiFi, Copying and printing, 24/7 outdoor digital info stand.

📍 7 1905 Gada Street, Koknese

☎ +371 29275412, +371 65161296

✉ turisms@aizkraukle.lv

🌐 www.visitaizkraukle.lv

🌐 www.visitkoknese.lv

📌 Visit Koknese | Tūrisms Koknesē

📱 @visitkoknese

Nereta Association

In Nereta, rural tranquility meets living history. Follow the banks of the Mēmele and Suseja Rivers to find ancient estates and hidden architectural gems that define our unique identity. Whether you're exploring our quiet streets or enjoying a warm welcome from the locals, you'll find a place where time slows down. Come and experience the authentic charm of Latvia's borderlands—peaceful, welcoming, and truly inspiring.



Sightseeing

75 Nereta Evangelical Lutheran Church. Built in the 16th century in Mannerism style with Late Gothic elements, this is one of the oldest stone churches in the Selonia region. The original Gothic interior has been preserved, along with several valuable historic artworks.

📍 2 Rīga Street, Nereta, Nereta Parish
☎ +371 28732973

76 Nereta Local History Museum. Opened in 2017, the museum preserves and presents the history of Nereta Parish – documents, household items, artworks, and stories about local events and people. Regular exhibitions and cultural activities take place.

📍 11 Ziedu Street, Nereta, Nereta Parish
☎ +371 20630736

77 Nereta Holy Spirit Roman Catholic Church. One of the newest churches in Aizkraukle Municipality was built between 1997 and 2000 with support from the local community. The contemporary church building was designed by architect Aivars Melderis.

📍 7 Kalēju Street, Nereta, Nereta Parish
☎ +371 29853938

78 Jānis Jaunsudrabiņš Museum “Riekstiņi”. Located in a quiet, hilly countryside setting, the 200-year-old homestead “Riekstiņi” was the childhood home of painter, writer, and poet Jānis Jaunsudrabiņš. Visitors can explore his artworks, personal belongings, photographs, exhibits about rural life in the 19th – 20th century, as well as a cultural-landscape trail and educational programs.

📍 “Riekstiņi”, Nereta Parish
☎ +371 29133076, +371 65176467



80



76

79 Konrādijs Degro Private Collection of Antiquities. A private museum located in a former household building, showcasing items related to the history of education, domestic life, and porcelain tableware. The collection provides insight into rural life across different historic periods.

📍 “Grauzes”, Nereta Parish
☎ +371 29206449

80 Pilkalne Manor. The estate includes the former owners’ residence, part of the horse stable, and a granary that houses a unique multi-level grain drying system. In the granary and beneath the park’s ancient trees, a cozy relaxation area has been created for use during the warmer seasons. Rooms can be used for countryside tourism purposes.

📍 Pilkalne, Pilskalne Parish
☎ +371 29341352, +371 29386604

81 Gricgale Medņi Tavern. A historic tavern of the Gricgale Manor, is preserving stories of teacher, writer, and publicist Lūcija Ūzāne and her family. Visitors can explore the tavern’s past and its role throughout history.

📍 Gricgale, Pilskalne Parish
☎ +371 28342969

82 Strobuki Hillfort. Mentioned in the 19th century, this ancient hillfort area contains archaeological evidence of early settlements. Today, the surroundings are arranged as peaceful natural recreation areas suitable for walking and small gatherings.

📍 Pilskalne Parish, GPS: 56.19537, 25.156075

83 Romalds Gurklis Large Wooden Sculpture Garden. A creative outdoor space featuring large wooden sculptures inspired by films and animated characters – including an impressive Viking ship and Shrek’s family house.

📍 Sproģi, Zalve Parish
☎ +371 26479814

84 Lielzalve Manor. The manor house, originally a hunting lodge from 1676, has preserved its granary and part of the historic park with old alleys. Indoors, visitors can explore exhibitions on the manor, Zalve village, and local school history, visit open craft workshops, and see a memorial room dedicated to poet Imants Auziņš.

📍 Zalve, Zalve Parish
☎ +371 28709378, +371 27071996

85 Ērberģe Manor. The 19th-century Classical manor house now is home to Mazzalve Primary School. During school holidays and weekends, visitors can join theatrical guided tours where characters from the manor’s past come alive. A network of park trails leads to the serene River Suseja.

📍 1 Skolas Street, Ērberģe, Mazzalve Parish
☎ +371 26156535

86 Vecmēmele Manor. A manor house built in the mid-19th century on the picturesque banks of the Mēmele River. Once owned by the von Haren family, it is currently being restored by private owners to create a new cultural and tourism space. Advance booking.

📍 Vecmēmele, Mazzalve Parish
☎ +371 26436761

87 Ērberģe Evangelical Lutheran Church. Built between 1695 and 1700, this is one of the oldest churches in the area. Beneath the church are crypts containing the remains of the manor owners. Restored paintings decorate the pulpit and organ loft.

📍 Ērberģe, Mazzalve Parish
☎ + 371 29120372

88 Kankalji Roman Catholic Church. A small rural wooden church is considered a valuable example of European wooden ecclesiastical architecture. The surroundings are peaceful and traditionally solemn.

📍 “Kankalji”, Mazzalve Parish
☎ + 371 26156535

89 Mazzalve Parish History Room. A three-room exhibition featuring old furniture, everyday household objects, and memorabilia of notable locals, including items preserved by the granddaughter of Eižens Finks. A unique collection of cow figures from around the world is also displayed.

📍 3 Liepu Street, Ērberģe, Mazzalve Parish
☎ +371 26325349.



86



85



93

90 Elmārs Vectirāns Bottle Collection. A private family collection of more than 1 400 bottles, presented with humorous stories and engaging anecdotes by the owner.

📍 “Brunavi”, Mazzalve Parish
☎ +371 26325349

91 Livestock Auction House. Livestock Auction House hosts cattle auctions open to visitors of different ages who wish to learn about modern livestock trading.

📍 “Krasti”, Mazzalve Parish
☎ +37125622889

92 Big Lulu Stone. The largest stone in Mazzalve Parish – 3.4 m wide, 4.6 m long, and 1.9 m high. According to legend, Swedish gold is hidden beneath it.

📍 Mazzalve Parish, GPS: 56.390501, 25.038544

Leisure Activities

93 Zanda Ragele Ceramics Workshop. At the workshop on the picturesque banks of the Suseja River, ceramic artist Zanda Ragele welcomes visitors into the world of clay and creativity. Every piece she crafts is shaped entirely by hand, using no technical tools, just skill, patience, and imagination. During the summer months, guests can join hands-on masterclasses and create their own one-of-a-kind ceramic artworks. Advance booking required.

📍 “Kalna Gribacāni”, Nereta Parish
☎ +371 28685585

94 Motocross Track “Saules”. The association “Saules Sports Club” offers a licensed motocross track. The track is designed for riders of all skill levels. It can be used by the hour, by the day, or for multi-day motocross camps.

📍 “Lidlauks”, Nereta, Nereta Parish
☎ +371 26359069

95 Alpaca Farm “DebessJums”. The farm offers educational tours with alpacas.

📍 “Purenes”, Nereta Parish
☎ +371 28347147, +371 26655352

96 Plant Nursery “Krustakrogs”. The nursery specializes in growing flowering and ornamental plants, offering a wide and diverse range of seedlings for creating gardens and landscaped areas.

📍 “Krustakrogs”, Nereta Parish
☎ +371 25561289

97 Historical Site – Manor “Mazā Kalnamuiža”. This historic 16th-century manor invites visitors to enjoy the beauty of nature, leisurely walks, and a glimpse of the past. The manor walls, flower fields, and picnic areas provide a picturesque backdrop for photos and relaxation. Visitors have access to camping spots and can organize outdoor events. The manor also offers home wine tasting. Advance booking required.

📍 “Mazā Kalnamuiža”, Nereta Parish
☎ +371 26255054

98 Farm “Čaidāni”. At the farm, visitors can explore modern, robotic dairy farming and automated feeding systems. The farmers’ stories offer a fresh perspective on rural life. For food enthusiasts, the farm also offers homemade cheeses and other dairy products. Advance booking required.

📍 “Čaidāni”, Nereta Parish
☎ +371 26514886, +371 26615437

99 Bicycle, SUP & Boat Rental “Vairogi”. Vairogi offer bicycle, SUP and boat rentals.

📍 “Vairogi”, Ērberģe, Mazzalve Parish
☎ +371 28384036

Catering



Café “Vairogi”.

“Vairogi”, Ērberģe, Mazzalve Parish,
+371 29330552

Catering by Ilze Odiņa-Bajare.

Catering, banquet platters and takeaway snacks.
Nereta Parish, +371 28379043

Accommodation



Glamping “DebessJums”.

“Purenes”, Nereta Parish, +371 28347147,
+371 26655352

Holiday Home “Stadelnieki”.

“Stadelnieki”, Mazzalve Parish, +371 29232882

Pilkalne Manor.

Pilkalne, Pilskalne Parish, +371 29341352

Hostel “Saules”.

4N Pasta Street, Nereta, Nereta Parish,
+371 26359069

Nereta Tourism Information Point



Provides information about tourism opportunities in Nereta Parish, Nereta Association, Aizkraukle Municipality, and the regions of Latvia. Souvenirs and local products are available for purchase. The tourism points’ interior design reveals the history and identity of Nereta. Free WiFi is available. Tourism information is available 24 hours a day on a digital outdoor display.

📍 5 Dzirnāvu Street, Nereta, Nereta Parish

☎ +371 26674300

🌐 www.visitaizkraukle.lv

📍 Neretas tūrisma informācijas punkts

Mazzalve Tourism Information Point



Provides information about tourism opportunities in Mazzalve Parish, Nereta Association, and Aizkraukle Municipality. A digital mirror allows you to step into the characters of the manor and discover its history in an interactive way. You can book guide services and excursion programs at Ērberģe Manor.

📍 1 Skolas Street, Ērberģe, Mazzalve Parish

☎ +371 26156535

📍 Mazzalves tūrisma informācijas punkts



Plaviņas Association

Plaviņas Association is a place where the majesty of the rocky banks of the Daugava River intertwines with a rich cultural and historical heritage, inviting you to discover the legendary Oļiņkalns Hill, the peaceful Plaviņas promenade, and the forest trails of Aiviekste and Vietalva. Feel the spirit of the Plaviņas Association – from the splendor of spring flowers to living traditions and rooster songs in three languages.



Sightseeing

100 Bebruleja Memorial Stone. Erected in the summer of 1993 to mark the Daugava Cultural and Historical Route. In the mid-1960s, with the construction of the Pļaviņas Hydroelectric Power Plant and the creation of a reservoir, the village of Bebruleja and its cemetery were flooded and now lie approximately 10 meters below the current water level of the Daugava River. Sculptor Vilnis Titāns carved the names of thirty flooded Bebruleja houses into a fieldstone.

📍 Pļaviņas, GPS: 56.60521, 25.69265

101 Pļaviņas Daugava Promenade. A nearly 2-kilometer-long protective dam that shields the city from spring floods. Embankment has become a popular spot for walks and sports activities. Along its edges are informational displays about the city's history, a photo frame, flower arches, and a model of a raft.

📍 Pļaviņas, GPS: 56.612579, 25.71172

102 Skanstupīte Waterfall. The Skanstupīte, also known as the Aizmata, is a tributary on the right bank of the Daugava. About 200 meters from where the Skanstupīte flows into the Daugava reservoir, a dolomite cliff forms the 0.7-meter-high Skanstupīte Waterfall, which is the highest non-flooded waterfall in the Daugava River basin.

📍 Pļaviņas, GPS: 56.61737, 25.75608

103 Swedish Fortification. A Swedish fortification built in the early 17th century, strategically located between the mouths of the Skanstupīte and Aiviekste rivers where they flow into the Daugava. The fort, with its four distinct bastions, is well preserved. While visiting the fort, you can also stroll through Friendship Park and the open-air stage.

📍 Pļaviņas, GPS: 56.61586, 25.75619

104 Gostīņi Cultural–Historical Park. A memorial park created based on research on the historical settlement of Gostīņi, featuring seven memory sites with stands describing each historical name. Each site features an information stand providing details and displaying photographs.

📍 1 Stiklinieku Street, Pļaviņas

105 Gostīņi Evangelical Lutheran Church. The church was celebrated in 1830. It is a cruciform building in the late Classicist style with a low tower topped by a semicircular dome covered with tin. Facing the main entrance is a chancel altar—an uncommon feature in Latvian sacred architecture.

📍 34 Lielā Street, Pļaviņas

106 Historical Site Oliņkalns. A small, gently sloping island covered in trees in the Pļaviņas HPP reservoir, opposite Stukmaņi. On the island, a small hillfort rampart, the remains of a stage, and a dolomite outcrop several meters high – the remains of Andreja Cliff – have been preserved. By the Daugava River, opposite Oliņkalns, there is a memorial stone erected by Latvian mountaineers in 1989.

📍 Klintaine Parish, GPS: 56.59083, 25.64249

107 Gift Shop “Latvis Dara”. A showcase of Latvia's finest craftsmen and makers. Offers locally made gifts. During the summer season, SUP board rentals are available.

📍 “Liepsalas”, Klintaine Parish

☎ +37125696363

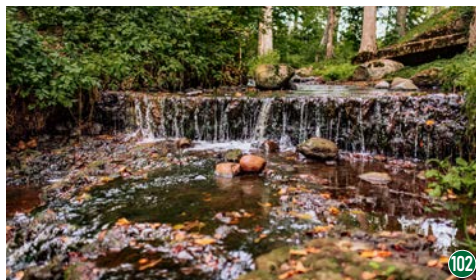
🌐 www.latvisdara.lv

108 Lokstene Shrine. From May to November, visitors can explore the main sanctuary of the Dievturi movement, located on an island in the Daugava River near the “Liepkalni” bakery. It can be reached by raft or boat. The sanctuary was opened in May 2017 and is intended for Dievturi rituals, celebrations of the human life cycle, as well as annual and national holidays.

📍 Klintaine Parish

☎ +371 29174200

🌐 www.lokstene.lv



102



106



103

109 Stukmaņi Manor. Stukmaņi Manor was built in the 16th century, and only part of the original complex has survived. Private property can be viewed from the outside. The manor complex consists of several buildings. Sikadele, built in the second half of the 17th century, is considered the oldest manor building.

📍 Stukmaņi, Klintaine Parish

110 Stukmaņi Peter's Stone (Border Stone). One of four historic Lokstene border stones. Engravings added no earlier than the 14th century show the coats of arms of the Archbishop of Riga and vassal Wrangel. Considered the oldest dated border stone in Latvia.

📍 Klintaine Parish, GPS: 56.60406, 25.67115

111 Three-Arch Stone Bridge. The three-span stone arch bridge over the old bed of the Veseta River was built in 1925 from roughly hewn fieldstones and is 19.60 meters long. The bridge has three arched spans, each 3.7 meters wide. Bridges of this type are a great rarity in Latvia.

📍 Aiviekste Parish, GPS: 56.618218, 25.852246

112 House Winery “Dzidris”. The farm “Ozoliņi” produces apple, rhubarb, and blackcurrant wine, as well as cider made from fruits and berries grown on their own farm and those of their nearest neighbors. Advance booking required for tastings.

📍 “Ozoliņi”, Aiviekste Parish

☎ + 371 29186953

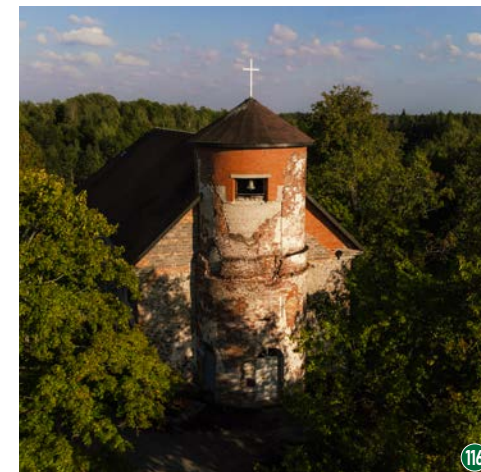
🌐 www.dzidris.lv

113 BURSH Brewery. On the banks of the Aiviekste River, beer with a story is brewed. The brewery's courtyard often becomes a venue for celebrations – featuring live music, workshops, festivals, and various seasonal events. Advance booking required for tastings and tours about the beer-making process.

📍 “Burši”, Aiviekste Parish

☎ +371 29228662

🌐 www.burshalus.lv



116

114 Odziena Manor Complex. Odziena Castle is one of the most notable Neo-Gothic buildings in Latvia. Five banquet halls are available in one of the castle's wings. Three outbuildings have been fully restored: the old tavern, the granary, and the brewery. A collection of Soviet-era cars and machinery is housed in one of the complex's buildings.

📍 Odziena, Vietalva Parish

☎ +371 2053 3333

🌐 www.odzienasmuiza.lv

115 Mini Zoo “Karlīnas”. Visitors can encounter a wide variety of animals – llamas, alpacas, kangaroos, raccoons, goats, and many others. Guests are invited not only to observe the animals, but also to feed and pet them, which will be especially enjoyable for younger visitors. There is a designated bonfire area, a café, and horseback riding is available.

📍 “Aivari”, Siljāni, Vietalva Parish

☎ +371 26108488

116 Vietalva Evangelical Lutheran Church. The church was built in 1814 and is located on a hill along the Vietalva–Odziena road. It was destroyed during World War II, and traces of shelling are still visible on the church walls. The building has a restored roof, and the main hall has been paved with cobblestones. Services are held on the first Sunday of every month.

📍 Vietalva Parish, GPS: 56.72703, 25.75742

117 Juris Kalniņš Exhibition Room. A classroom has been established in memory of Juris Kalniņš (1847–1919), a teacher at the Vietalva parish school. Juris Kalniņš was one of the leaders of the first national awakening in the rural areas of Vidzeme, a unique figure – an outstanding teacher, a highly talented choir conductor, an active public figure – a Young Latvian, a publicist, a newspaper editor, and a writer.

📍 “Skola”, Vietalva Parish

☎ +371 65133848

Leisure Activities

118 Viking Boat Tours. Experience a ride on a Viking longship along Oliņkalns, Sēlpils Hillfort, and many inlets of the Daugava River, accompanied by stories from a guide or captain. The boarding point is at the “Annas Klints” camper area.

📍 “Annas Klints”, Klintaine Parish
☎ +371 26161131

119 Boat Rental “Mežmalas laivas”. Provides canoe and kayak rental with delivery to rivers in the area.

📍 “Annas klints”, Klintaine Parish
☎ +371 26161131

120 Horseback Riding “Pīlādži”. Offers horseback riding lessons, guided rides in the arena and countryside, and family-friendly activities in a peaceful rural setting.

📍 “Stēģi-2”, Klintaine Parish
☎ +371 22088402

121 Farm “LavanDulla”. Features gardens with various lavender, hydrangea and rose varieties. Guests can enjoy peaceful picnics by the lake, take part in creative workshops, swim, fish, row a boat or go paddleboarding. Advance booking required.

📍 “Augšalunēni”, Vietalva Parish
☎ +371 25535797
🌐 www.lavandulla.lv

122 Sports Club “Vietalva”. In summer, the area offers camping and tent sites, while winter brings several cross-country skiing trails with equipment rental. Stadium and sports grounds are available throughout the year.



118



125

📍 “Mailes”, Vietalva Parish
☎ +37128626845

123 Sports and Recreation Complex “Mežezers”. Sports and Recreation Complex “Mežezers” offers winter ski and snowboard slopes with jumps, equipment rental, instructors, a sauna, café, and accommodation. In summer, the complex provides water equipment rental – including SUP boards and boats – along with sports fields and various recreation facilities.

📍 “Mežezers”, Aiviekste Parish
☎ +371 26411213
🌐 www.mezezers.lv

124 Sports Base “Jankas – Jaujas”. The sports base features cross-country skiing trails in winter and tracks for Nordic walking, running, cycling, and roller skiing during the rest of the year. The site includes an 800-meter asphalt loop and a 2nd-category biathlon shooting range.

📍 Aiviekste Parish
☎ +371 26171250

125 Ski and Recreation Area “Cigoriņkalns”. Ski and Recreation Area “Cigoriņkalns” offers ski slopes of various difficulty levels, a tube-sledding track, and cross-country trails through the surrounding forest. The site also includes ski rentals and a designated picnic area.

📍 “Cigoriņi”, Aiviekste Parish
☎ +371 29203537

126 Horse Riding “Dzintaru zirgi”. “Dzintaru zirgi” provides horseback riding, carriage rides (in winter – sleigh rides), event appearances (weddings, celebrations), and a picnic area for guests.

📍 “Dzintari”, Aiviekste Parish
☎ +371 26323070

127 Stadium “Gostiņi”. A football stadium with a 140-seat stand. Hosts training sessions, matches and sports events.

📍 61A Lielā Street, Pļaviņas
☎ +371 26564699

128 Outdoor Squash Court. The only free outdoor squash court in Latvia, accessible throughout the year.

📍 66B Raiņa Street, Pļaviņas

129 Obstacle Course & Sports Area. An obstacle track, street workout area, basketball courts and an indoor sports hall for various activities.

📍 50 Daugava Street, Pļaviņas

130 SUP Boards & Kayaks. SUP boards and kayaks are available for use on the nearby Daugava or for take-away to other locations.

📍 47 Daugava Street, Pļaviņas
☎ +371 29529743



Accommodation



Camping Site “Annas klints”.

Klintaine Parish, +371 26161131

Guest House “Arita”.

30 Daugava Street, Pļaviņas, +371 26757742

Guest House “Camata”.

“Vītolīņi”, Odziēna, Vietalva Parish,
+371 29203367, +371 2613034

Guest House “Jumiezis”.

47 Daugava Street, Pļaviņas, +371 29501699

Guest House “Odziēnas Krogsmāja”.

Odziēna, Vietalva Parish, +371 20533333,
www.odziēnasmuiza.lv

Holiday Home “Kaļviļumi”.

Vietalva Parish, +371 29494504

Holiday Home “Vasarnīca”.

9 Dzelzceļa Street, Pļaviņas, +371 26102010

Hostel of Odziēna Boarding School.

Odziēna Boarding School, Vietalva Parish,
+371 65133848

Motel “Bu-bū”.

Klintaine Parish, +371 65133273

Recreation area “Pupiņi”.

Klintaine Parish, +371 26618701

Recreation Complex “Daugavas Avoti”.

Klintaine Parish, +371 26368248

Recreation Complex “Mežezera stāsts”.

“Zvejurmēmi”, Aiviekste Parish, , +371 29664410,
www.mezezerastasts.lv

Recreation Complex “Mežezers”.

“Mežezers”, Aiviekste Parish, +371 26411213,
www.mezezers.lv

Tent Site in the Territory of Beer Brewery

“Burš”. “Burši”, Aiviekste Parish, +371 29228662,
www.burshalus.lv

Catering



Bakery – Café “Liepkalni”. “Liepsalas”, Klintaine Parish, +371 28301838, www.liepkalni.lv

Bar – Café “Jumprava” (Takeaway).

50 Daugava Street, Pļaviņas, +371 25568774

Bistro – Bar “Velniņi”.

“Velniņi”, Klintaine Parish, +371 65129281

Café “Kafevego”.

2 Daugava Street, Pļaviņas, +371 29115396

Café “Pie Upes”.

75 Daugava Street, Pļaviņas, +371 27799035

Pļaviņas Secondary School Canteen. Available during the school year by prior arrangement with school staff. 101 Daugava Street, Pļaviņas.



Pļaviņas Tourism Information Point



Provides information about tourism opportunities in Pļaviņas, the Pļaviņas Association, Aizkraukle Municipality, and the surrounding regions of Latvia. Visitors can explore the Pļaviņas Museum exhibition, which reveals the history of the town, the Daugava canyon before and after flooding, and photographs of major historical floods. The craft group “Skanstupe” welcomes visitors to explore beautifully woven textiles and enjoy live craft demonstrations, offering an engaging glimpse into traditional craftsmanship.

📍 49 Daugava Street, Pļaviņas

☎ +371 22000981

🌐 www.visitaizkraukle.lv

📍 Pļaviņu tūrisma informācijas punkts

Skrīveri and Skrīveri Parish

Skrīveri invites you to explore its rich and diverse nature. Numerous trails, rivers, and the wide banks of the Daugava River reveal landscapes that encourage you to stop and enjoy the moment. The Skrīveri Dendrological Park and Aizkraukle Castle Mound impress with their historical atmosphere, stories and legends. Every corner of Skrīveri holds a piece of the past, waiting to be discovered.



Sightseeing

131 Aizkraukle Hillfort. The hillfort is approximately 100 meters long, 40 meters above the level of the Daugava River, and about 67 meters above sea level. The hillfort is mentioned several times in 13th-century written sources. The site of an ancient church can be seen at the foot of the hillfort. A parking lot has been established near the hillfort. At its summit, a rest area has been set up, offering a scenic view of the Daugava River valley.

📍 Skrīveri Parish, GPS: 56.621616, 25.131172

132 Skrīveri Dendrological Park. In the past, the park was planted with various tree species from the temperate climate zone of the entire Northern Hemisphere. Today, approximately 250 of these tree species can be seen in the park. The castle stairs, a stone card table, a tea terrace, a fountain, and the ruins of the castle courtyard have been preserved from the manor's heyday.

📍 Skrīveri Parish GPS: 56.6175, 25.053959

133 Moss Village Trail and Lucky Bear Trail. Both trails begin in the area around Lake Kalnamuiža, which is surrounded by forests and located near the Skrīveri Dendrological Park. Each trail is 800 meters long. The Moss Village Trail is associated with A. Upīts's work "The Boys of Moss Village." As you walk along the trail, you can encounter wooden figures of the people of Moss Village. The Lucky Bear Trail was created in 2020 and winds along the lake's shore via wooden walkways. At the beginning of the trail, you can reach one of the artificial islands in the middle of the lake.

📍 Skrīveri Parish, GPS: 56.623272, 25.043024

134 "Ragāres" Herb Farm. Farm grows and processes various medicinal plants, herbs, fruits, berries, and vegetables, as well as collecting maple and birch sap to make syrups. Visitors can see, touch, taste, and smell various medicinal plants and learn about their everyday uses.

📍 "Ragāres", Skrīveri Parish

📞 +371 29229588

🌐 www.ragares.lv



135 Spirits Brewery "Drunka". The small, family-run distillery produces "Drunka" spirits with various berry and fruit flavors. Tasting sessions featuring stories about the creation of "Drunka," the history of the tavern, and "Kalnakrogs Power Soup" cooked over an open fire take place in historic Kalnakrogs.

📍 "Lāčplēši", Skrīveri Parish

📞 +371 26474460, +371 29475005

136 Great Oak "Lielais Andrejs". A natural and cultural historical monument offering a sweeping view of the ancient Divāja Valley. The oak tree was unveiled in the summer of 1976 by the poet Imants Ziedonis together with his son Rimants. In honor of the 100th anniversary of the writer Andrejs Upīts, it was named "Lielais Andrejs" a year later.

📍 Skrīveri Parish, GPS: 56.629738, 25.095627

137 Kraukļu Boulder. A 40-ton boulder considered an ancient cult site, located next to Kraukļupīte stream and natural spring.

📍 Skrīveri Parish, GPS: 56.628345, 25.123436

138 Latvia University of Life Sciences and Technologies Agriculture Research Institute. The Institute of Agriculture is engaged in the breeding and seed production of perennial grasses and conducts agrotechnical research in the field of crop production. It offers educational tours for agricultural professionals and other interested parties.

📍 28 Jānis Purapuķe Street, Skrīveri

📞 +371 26017777, +371 65197512

🌐 zzi.lbtu.lv

139 Garden "Paradise Lavender". Lavender, grown on the hills of Skrīveri, enchants visitors with its fragrance and grace. For just a couple of weeks, visitors can enjoy walks and tours through the lavender garden. The rest of the time, lavender products are available – jams, honey, scented sachets, and candles.

📍 Skrīveri Parish, GPS: 56.633915, 25.127323

📞 +371 29423688



133

140 Andrejs Upīts Memorial House and Garden. The writer Andrejs Upīts lived in the house from 1908 to 1915 and spent his summers there from 1922 to 1940. After the writer's death, the house became a branch of the Andrejs Upīts Memorial Museum. Surrounding the museum is the garden planted by the writer, where his beloved ash tree, red-leafed maple, walnut tree, and oaks grow.

- 📍 58 Daugava Street, Skrīveri
- ☎ +371 29496725,
- 🌐 www.memorialiemuzeji.lv/museums/andreja-upisa-memoriala-maja

141 Sculpture "Gotiņa". An impressive large-format sculpture "Gotiņa" can be seen in Skrīveri – a modern interpretation of one of Latvia's most beloved sweets. Made of concrete and bronze, it symbolizes Skrīveri connection with the legendary milk caramel "Gotiņa". The industrial production of "Gotiņa" began in Skrīveri in 1957.

- 📍 Intersection of Jāņa Purapukes and Daugavas Streets, Skrīveri, GPS: 56.640787, 25.115057



136



140



142

142 Mural "Midsummer Night". The mural "Midsummer Night" by master artists Laimdots Mūrnieks and Uldis Zemzars was created in 1958. In 1961, when the building of the Latvian Institute of Agricultural Research was constructed and opened in Skrīveri, the painting was displayed in the institute's hall. When the institute moved to smaller premises, one of the sections of the panorama was retained. The remaining five sections were donated to the Skrīveri Cultural Center.

- 📍 1 Andrejs Upīts Street, Skrīveri
- ☎ +371 29475005

143 Memorial Grove "Green Land". The grove of green trees was planted by actors from the National Theater in 1977. Each oak tree planted by an actor has a plaque attached to it bearing the planter's first and last name. Across from the grove stands "Kalniņi," the birthplace of Andrejs Upīts.

- 📍 "Kalniņi", Skrīveri Parish, GPS: 56.658962, 25.084932

144 Kurelians' Memorial Stone. The Kurelians' Movement began on July 28, 1944, at the "Robežas" estate in Skrīveri, where soldiers and young people gathered to form the so-called Skrīveri Battalion, numbering several hundred. A memorial to the Kurelians has since been established in Skrīveri along the Divažas iela–Mucenieki road, leading toward the "Robežas" estate, created at the initiative of local retirees.

- 📍 Skrīveri Parish, GPS: 56.66346, 25.122204

Leisure Activities

145 Skrīveri Food Factory. A family-run confectionery factory preserving authentic handcrafted techniques. Visitors can learn about the company's history and wrap their own "Gotiņa" caramels, receiving a certificate for participation.

- 📍 2 Daugava Street, Skrīveru pag.
- ☎ +371 28685600, +371 27827363
- 🌐 www.skriverugotina.lv

146 "Flower Street House". Groups of friends, kindergarten classes, and school groups are invited to taste various honey products, make beeswax candles, and learn about beekeeping and the life of bees. They can also explore the ancient craft of basket weaving from twigs, with the opportunity to create their own basket.

- 📍 17 Ziedu Street, Skrīveri
- ☎ +371 26126337



134



139



143

147 "Bee Therapy Hut". During the beekeeping season, it is possible to sleep in a beehive-shaped bed in the cottage, listen to the subtle vibrations of the bees' buzzing, and breathe in the scent of propolis that fills the room.

- 📍 4A Ziedu Street, Skrīveri
- ☎ +371 29456108

148 Creative Studio "RADADA". A clothing brand and creative workshop where vibrant prints are created on garments using hand-screen printing technique. The designs are inspired by Latvia's cultural heritage. Here you can enjoy a creative tour with hands-on activities, where you can print your own fabric bag.

- 📍 70 Daugava Street, Skrīveri
- ☎ +371 28386655
- 🌐 www.radada.lv

149 Creative Workshops "Skrīveru Saldumi". During the workshop, visitors can learn about the company's history, traditions, and the craftsmanship of its employees. You can wrap Skrīveru "Gotiņa" candies with special labels, create figurines from soft toffee and marzipan, participate in a truffle-making masterclass, and paint marshmallows. Outdoor games are available in the courtyard, along with the chance to try the symbolic "milking" of a "Gotiņa." During the warmer months, these activities are also accessible to guests with special needs.

- 📍 82 Daugava Street, Skrīveri
- ☎ +371 20366668,
- 🌐 www.skriverusaldumi.lv/radosas-darbnicas

150 "Skrīveri Homemade Ice Cream". During the educational tour, visitors are invited to learn about the history of ice cream, discover the secrets of how it's made, taste up to 20 different kinds of ice cream, and learn how to make ice cream. A great place for birthday celebrations – with plenty of ice cream, a festive atmosphere, and a special birthday candle that will make the celebration unforgettable for both adults and children.

- 📍 96 Daugava Street, Skrīveri
- ☎ +371 28361561
- 🌐 www.majassaldejums.lv



150

151 “Lilija Soaps”. Soap maker Lilija Ziediņa creates realistic “edible-looking” soaps shaped like cakes, desserts, baskets and other designs. In Lilija’s workshops, you can learn candle-making and soap-making skills using various techniques. The artisan can accommodate up to 8 guests in her workshop.

📍 2 Sprīdīša Street, Skrīveri
☎ +371 22376994

152 Water Tourism Centre “Balta Kaza”. Offers ferry services from Skrīveri to Jaunjelgava, as well as tours and cruises on the boat “Balta Kaza”. The Water Tourism Center’s rental shop offers recreational equipment: canoes, kayaks, rowboats, motorboats (5 hp engine), recreational rafts (for 6 people), large rafts, SUP boards, catamarans, and bicycles. Recreation and camping areas are available, along with an educational, adventure-filled walking trail for students and a boat launch site – SLIP.

📍 “Pārcēlāji”, Skrīveri Parish
☎ +371 29442587

153 “Sarmīte’s Stables”. Horseback riding and photo sessions for children and adults. Basic riding lessons and young rider training are available.

📍 “Lielkažoki 1”, Skrīveri Parish
☎ +371 29748079



153

Skrīveri Tourism Information Point



Provides information about tourism opportunities in Skrīveri Parish, Aizkraukle Municipality and surrounding regions. Visitors can purchase local souvenirs and handicrafts.

📍 85 Daugava Street, Skrīveri, Skrīveri Parish
☎ +371 25661983
🌐 www.visitaizkraukle.lv
📍 Skrīveru tūrisma informācijas punkts
📍 Visit Skrīveri | Tūrisms Skrīveros



Catering



Complex “Klidziņa”. 10 Rīga Street, Skrīveri, Skrīveri Parish, +371 20242588, +371 29180386, www.klidzina.lv

Bakery “Skrīķu našķi”. 6 Stacijas laukums, Skrīveri, +371 25414585 (on Fridays and Saturdays)

“Drift Tavern”.
98 Daugava Street, Skrīveri, +371 26426416

“Skrīveri Homemade Ice Cream”.
96 Daugava Street, Skrīveri, +371 28361561, www.majassaldejums.lv

Accommodation



Complex “Klidziņa”.
10 Rīga Street, Skrīveri Parish, +371 20242588, +371 29180386, www.klidzina.lv

Guest House “Zilais Zirgs”.
“Lāčauss”, Skrīveri Parish, +371 29286592

Holiday Home “Villa Lakstīgalas”.
24 Lakstīgalu Street, Skrīveri, +371 28274897, www.villalakstigalas.lv

Luxury Retreat “Seven Mirrors”.
“Upeslejas 1”, Skrīveri Parish, +371 22448844, www.7mirrors.lv

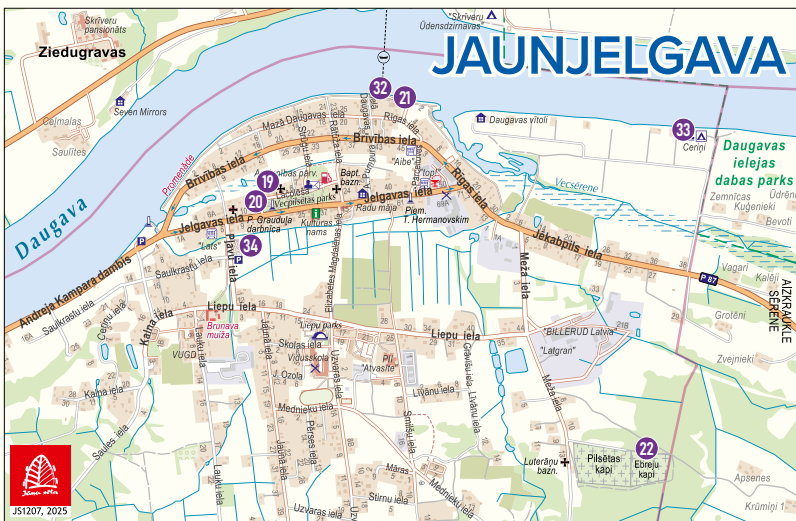
Recreation Complex “Skrīveru Ūdensdzirnavas”.
“Ūdensdzirnavas”, Skrīveri Parish, +371 29469983, +371 22309383



Tourism information point recommends

- Audioguide “Skrīveri Dendrological Park”
- Audioguide “Nature Park “Daugava Valley””







Publisher:
Aizkraukle Municipality Government, 2026

Photos: Aizkraukle Municipality Tourism Department Archive and
Tourism Objects Archives

Maps: Jana seta Ltd.