



# Sauna Technology **2013**



EXCELLENT KNOW-HOW FOR YOUR WELL-BEING

# :: INNOVATIVE TECHNOLOGY AND MARKET LEADER QUALITY



### JUST RELAX.

Bathe in comforting warmth. Surround the body with gentle herbal steam and let your spirit inhale its mild aromas. To take a sophisticated sauna is not a short-lived trend but part of a life philosophy that enhances the body's ability to remain healthy and well-balanced.

### FULFILL INDIVIDUAL DESIRES.

For decades, EOS has been designing its sauna technology with the individual desires of sauna enthusiasts in mind. Regardless of whether it is the classic Finnish sauna, the theme sauna, the herbal bath or soft steam bath: We know what kind of demands the modern sauna must meet. Therefore, it is no wonder that we are number one in Germany in the commercial as well as in the private sector, when dealing with reliable and innovative sauna technology.

### RELY ON OUR COMPETENCE.

On the following pages you will find everything you need to know about the current range of EOS sauna heaters and EOS evaporator systems, interesting information about our commercial sauna heaters, EOS control units, and an overview of our sauna accessories. The technical data shown on the following pages will help you to quickly find the right devices for your customers. Make your customer's dreams reality. That's easy - with EOS.

## CONTENTS

Overview of our Finnish sauna heaters .....	04 - 05
Overview of our sauna heaters with evaporators and accessories .....	06 - 07
Overview of our sauna control units .....	08 - 09
Sauna heaters .....	10 - 17
Sauna heaters with evaporators and accessories.....	18 - 21
Commercial sauna heaters.....	22 - 25
Commercial sauna heaters with evaporators .....	26 - 28
Steam generators and steam technology.....	29
Cover guard.....	30 - 31
S-Guard and sauna safety.....	32 - 33
Sauna control units ECON .....	34 - 35
Sauna control units EMOTEC® and DLF .....	36 - 37
Sauna control units EMOTOUCH.....	38
Coloured light systems .....	39
Infrared technology.....	40 - 43
Sauna accessories .....	44 - 46
Important notes.....	47



## :: OVERVIEW OF OUR FINNISH SAUNA HEATERS

### Basic



**Thermat**

Performance classes:  
4.5 / 6.0 / 7.5 / 9.0 kW  
More information  
on page 11



**43FN**

Performance classes:  
6.0 / 7.5 / 9.0 kW  
More information  
on page 11



**P1**

Performance classes:  
10.5 / 12.0 / 15.0 kW  
More information  
on page 11

### Classic



**Euro**

Performance classes:  
7.5 / 9.0 / 10.5 / 12.0 kW  
More information  
on page 12



**Cubo**

Performance classes:  
7.0 / 9.0 / 12.0 kW  
More information  
on page 12



**Mini**

Performance class:  
3.0 kW  
More information  
on page 13



**M3**

Performance class:  
3.0 kW  
More information  
on page 13



**RKS**

Performance class:  
6.0 kW  
More information  
on page 14



**Filius**

Performance classes:  
4.5 / 6.0 / 7.5 kW  
More information  
on page 14



**Fin-Tec**

Performance classes:  
6.0 / 7.5 / 9.0 kW  
More information  
on page 15



**Fin-Tec S**

Performance classes:  
6.0 / 7.5 / 9.0 kW  
More information  
on page 15



**34.G**

Performance classes:  
15.0 / 18.0 / 21.0 / 24.0  
27.0 / 30.0 / 36.0 kW  
More information  
on page 16



**46.U Compact**

Performance class:  
7.5 kW  
More information  
on page 16

### Premium



**Germanius**

Performance classes:  
12.0 / 15.0 / 18.0 kW  
More information  
on page 23



**Goliath 34.G II**

Performance classes:  
18.0 / 24.0 / 30.0 / 36.0 kW  
More information  
on page 23



**Euro-Max**

Performance classes:  
9.0 / 12.0 / 15.0 kW  
More information  
on page 24



**Saunadome**

Performance classes:  
9.0 / 12.0 / 15.0 / 18.0 kW  
More information  
on page 24



**46.U, Professional**

Performance classes:  
6.0 / 7.5 / 9.0 / 12.0 kW  
More information  
on page 25



## :: OVERVIEW Bi-O SAUNA HEATERS AND ACCESSORIES

### Basic



**Bi-O Thermat**

Performance classes:  
6.0 / 7.5 / 9.0 kW  
More information  
on page 11

### Classic



**Bi-O Mini**

Performance class:  
3.0 kW  
More information  
on page 18



**Bi-O Filius**

Performance classes:  
4.5 / 6.0 / 7.5 kW  
More information  
on page 19



**Bi-O Tec**

Performance classes:  
6.0 / 7.5 / 9.0 kW  
More information  
on page 19



**Design bracket  
with herbal pot**

More information  
on page 20



**Residual water  
drip pan**

More information  
on page 20



**FWA 01 Compact  
Fixed water  
connection**

More information  
on page 21



**Additional  
evaporator**

More information  
on page 21



**Cover  
guard**

More information  
on page 30-31

### Premium



**Bi-O Max**

Performance classes:  
9.0 / 12.0 / 15.0 kW  
More information  
on page 26



**Bi-O Germanius**

Performance classes:  
12.0 / 15.0 / 18.0 kW  
More information  
on page 26



**Bi-O Mat U**

Performance classes:  
6.0 / 7.5 / 9.0 / 12.0 kW  
More information  
on page 26



**Bi-O Star**

Performance classes:  
15.0 / 18.0 / 21.0 / 24.0 / 30.0 kW  
More information  
on page 26



**Millwheel sauna**

Performance classes:  
18.0 / 27.0 / 30.0 / 36.0 kW  
More information  
on page 28



**Steam generator  
SteamTec Classic**

Performance classes:  
4.5 / 6.0 / 9.0 / 12.0  
15.0 / 18.0 kW  
More information  
on page 29



**Steam generator  
SteamTec Premium**

Performance classes:  
4.5 / 6.0 / 9.0 / 12.0  
15.0 / 18.0 kW  
More information  
on page 29

## :: OVERVIEW OF OUR SAUNA CONTROL UNITS

### Basic



**ECON D1**

Sauna control unit,  
Finnish  
More information  
on page 35



**ECON H1**

Sauna control unit,  
Bi-O  
More information  
on page 35

### Classic



**ECON D2**

Sauna control unit,  
Finnish  
More information  
on page 35



**ECON H2**

Sauna control unit,  
Bi-O  
More information  
on page 35



**EMOTEC®  
DC 9000**

Sauna control unit,  
Finnish  
More information  
on page 36



**EMOTEC®  
HCS 9003**

Sauna control unit,  
Bi-O  
More information  
on page 36

### Premium



**S-GUARD**

Temperature  
monitoring device  
More information  
on page 32



**Installation/Setup  
EMOTEC®**

EMOTEC DC 9000 DLF,  
Finnish  
More information  
on page 37



**Installation/Setup  
EMOTEC®**

EMOTEC HCS 9003 DLF,  
Bi-O  
More information  
on page 37



**EMOTOUCH II PB**

Add-on variant  
in EMOTEC design  
More information  
on page 38



**EMOTOUCH II AF**

Installation variant  
Aluminium frame  
More information  
on page 38



## :: SAUNA HEATERS

### Basic

### :: BASIC SAUNA HEATERS

Regardless of whether it is an icy cold winter's day or a mild summer's night - a bath in the sauna is always relaxing. With a heater from the EOS basic series, it is easy to be comfortable in a rustic sauna made of solid wood or in a modern designed element sauna. The basic range already offers a variety of Finnish or evaporator heaters that are available as upright or wall mounted heaters, depending on the output variant.

All our models are compact in construction, and therefore provide enough space for your individual cabin design. With a capacity between 4.5 and 15 kW, they are ideally suited for saunas with a volume between 4 and 25 m³. At EOS we make the outer casings of our heaters from powder-coated steel or chromium steel. Float mounted, they heat up quietly and thus provide for a particularly refreshing sauna bath. Heating elements and stone baskets are made from stainless steel to prevent excessive scale formation. The bases in the lower area of the fresh air intake are also used as drip pans.

The excellent convection of the EOS heaters provides optimum air circulation in the cabin and thus creates a pleasant sauna climate. All sauna heaters from EOS are of course supplied with the special Olivin-Diabas sauna stones.



#### Thermat

- Wall-mounted heater for family saunas.
- Stone accommodation grid and drip pan made of stainless steel.
- Height-adjustable stone rest.
- Connection box on the back.
- Colour: Anthracite pearl effect.



#### Bi-OThermat

- Combination wall-mounted heater with evaporator located at side.
- Double-walled heater construction with interior lining and outer casing.
- Stone accommodation grid and drip pan made entirely of polished stainless steel.
- Evaporator with approx. 5 l filling quantity.
- Herb bowl on the cover grid.
- Evaporator-integrated-dry walkway and acoustic low water alarm.



#### P1

- Floor-standing heater for hotel and commercial sauna.
- Interior lining and outer casing made entirely of stainless steel.
- Connection box on the back.
- 2 x 15 kg stones included.



#### 43FN

- Floor-standing heater for family saunas.
- Can also be installed as a as a wall-mounted model
- Connection box on the back.
- Stone accommodation grid made of stainless steel.
- Colour: Anthracite pearl effect.

Product name	Colour	Outer dimensions (H x W x D)	Connection	Power	Art. No.
Thermat	Anthracite pearl effect	780 x 375 x 360 mm	400 V 3N AC	4.5 kW	94.4819
				6.0 kW	94.4820
				7.5 kW	94.4821
				9.0 kW	94.4822
Bi-O Thermat	Anthracite pearl effect	760 x 450 x 380 mm	400 V 3N AC	6.0 kW	94.4823
				7.5 kW	94.4824
				9.0 kW	94.4825
P1	Stainless steel	725 x 630 x 375 mm	400 V 3N AC	10.5 kW	94.2830
				12.0 kW	90.8775
				15.0 kW	94.8776
43FN	Anthracite pearl effect	710 x 420 x 340 mm	400 V 3N AC	6.0 kW	94.2234
				7.5 kW	94.2235
				9.0 kW	94.2236

## :: SAUNA HEATERS

### Classic



#### Euro

- Wall mounted heater for private and commercial saunas.
- Triple casing technology with stone basket as additional interior lining.
- Highly robust and reliable.
- Cast iron cover.
- Legs for upright installation optional.
- Outer casing made of stainless steel.

#### Cubo

- Floor-standing heater for private and commercial saunas.
- Timeless, straight-forward design.
- Colour: Anthracite pearl effect.
- Interior lining made of stainless steel.
- Cover made of stainless steel.
- Approx. 25 kg stone basket (inc. stones).
- Highly robust and reliable.
- Optimized radiation heat and convection.
- Connection box integrated on the back.

#### Mini

- Wall mounted heater for small saunas.
- Extremely compact and space-saving design.
- Power 3 kW, 230 V 1N AC
- Interior lining and outer casing made of stainless steel.
- Inc. silicone power cable.

#### M3

- Wall mounted heater for small saunas.
- Built-in thermostatic control using the temperature regulation range 40 °C - 110 °C.
- Triple casing construction.
- Interior lining and outer casing made of stainless steel.
- Control panel can be mounted on the left and right sides.
- Extremely compact and space-saving.

Product name	Colour	Outer dimensions (H x W x D)	Connection	Power	Art. No.
Euro Legs for upright installation: Art. No. 90.7110	Stainless steel	800 x 460 x 350 mm	400 V 3N AC	7.5 kW	90.7686
				9.0 kW	90.7687
				10.5 kW	94.5185
				12.0 kW	90.8076
Cubo	Anthracite pearl effect	750 x 400 x 385 mm	400 V 3N AC	7.5 kW	94.5073
				9.0 kW	94.5074
				12.0 kW	94.5075
Mini	Stainless steel	660 x 300 x 215 mm	230 V N AC	3.0 kW	94.2445
M3	Stainless steel	600 x 300 x 200 mm	230 V N AC	3.0 kW	94.1921



## :: SAUNA HEATERS

### Classic



#### Fin-Tec

- Wall mounted heater for private saunas.
- High-quality powder coating in anthracite pearl effect.
- High quality, attractively shaped die-cast aluminium cover.
- Stone accommodation grid made of stainless steel.
- Height-adjustable stone rest.
- Connection box on the back.

#### Fin-Tec S

- Floor-standing heater for private saunas.
- High-quality powder coating in anthracite pearl effect.
- High quality, attractively shaped die-cast aluminium cover.
- Stone accommodation grid made of stainless steel.
- Height-adjustable stone rest.
- Connection box on the back.

#### RKS

- Wall mounted heater for family saunas.
- Installation on attached air duct.
- Very flat – only 250 mm depth.
- Outer casing made of polished stainless steel.
- Connection space at front inc. silicone power cable.



#### Filius

- Flat wall mounted heater for family sauna.
- Very flat – only 240 mm in depth. Outer casing anthracite pearl effect.
- High quality cover made of stainless steel.
- Ideal for small to medium-sized sauna cabins.

Product name	Colour	Outer dimensions (H x W x D)	Connection	Power	Art. No.
RKS	Stainless steel	780 x 470 x 250 mm	400 V 3N AC	6.0 kW	90.5511
Filius	Anthracite pearl effect	575 x 403 x 240 mm	400 V 3N AC	4.5 kW	94.5031
				6.0 kW	94.5032
				7.5 kW	94.5033
Fin-Tec	Anthracite pearl effect	780 x 375 x 380 mm	400 V 3N AC	6.0 kW	94.3138
				7.5 kW	94.3139
				9.0 kW	94.3140
Fin-Tec S	Anthracite pearl effect	780 x 375 x 360 mm	400 V 3N AC	6.0 kW	94.4383
				7.5 kW	94.4384
				9.0 kW	94.4385



## :: SAUNA HEATERS

*Classic*



### 34.G, Professional

- Floor-standing heater for commercial saunas.
- Ideal for intensive commercial use.
- Two construction sizes:  
Size 1 (750 mm): 15.0 - 21.0 kW  
Size 2 (1000 mm): 24.0 - 36.0 kW
- Interior lining and outer casing completely made of stainless steel.
- Triple casing technology and large stone basket.
- Optimised radiation heat and convection through adapted stone quantity.
- Stacking frame for 30 kg more stones (optional).

### 46.U Compact rear wall mounted

- Floor-standing heater for private and commercial saunas.
- Outer casing made of stainless steel.
- Very flat – only 200 mm installation depth.
- Stone basket with pouring bowl across the entire heater width.
- Inc. pouring funnel with extension hose and mains cable.
- Inc. safety grid.
- Compact version – only 920 mm wide.
- Inc. 15 kg stones.

Product name	Colour	Outer dimensions (H x W x D)	Connection	Power	Art. No.
34.G (Size 1)	Stainless steel	950 x 750 x 530 mm	400 V 3N AC	15.0 kW	90.8586
				18.0 kW	90.8587
				21.0 kW	90.8588
34.G (Size 2)	Stainless steel	950 x 1000 x 530 mm	400 V 3N AC	24.0 kW	90.8589
				27.0 kW	90.8590
				30.0 kW	90.8591
				36.0 kW	90.8592
Stacking frame to increase the stone volume by an additional 30 kg (for 34.G)				Size 1	94.4000
				Size 2	94.4001
46.U Compact	Stainless steel	870 x 920 x 200 mm	400 V 3N AC	7.5 kW	94.4250

## :: Bi-O SAUNA HEATERS AND ACCESSORIES

### Classic



#### Bi-O Mini

- Combination wall mounted heater for small saunas.
- Extremely compact and space-saving design.
- In addition to the Finnish sauna bath, this heater provides the options humid-hot air bath, herbal steam bath and hot air bath in extremely small dimensions.
- Outer casing and interior lining made of stainless steel.
- Power 3 kW (0.75 kW evaporator).
- Connection to 230 V N AC (with separate 16 A fuse) possible.

### STEAM SYSTEMS.

Today a classic Finnish sauna, tomorrow a comfortable hot air bath, and the next day a stimulating herbal steam bath: With an EOS evaporator system, your sauna can be transformed into a diversified humid-warm air bath or a luxurious beauty-oasis. With EOS sauna heaters with integrated evaporators, the steam escapes around the sauna stones. That is how the steam is distributed optimally into the cabin. Oils and essences are placed into the supplied evaporator bowl, which transform the sauna bath into an aromatically exhilarating experience for the senses.



#### Bi-O Filius

- Compact wall mounted heater with extra-flat construction form.
- Ideal for small to medium-sized sauna cabins.
- Outer casing anthracite pearl effect.
- Elegant cover made of stainless steel.
- Only 240 mm depth.
- Herb bowl to accommodate herbs, essential oils and essences.
- Integrated dry walkway and acoustic low water alarm.
- Evaporator can be mounted on the left and right sides.



#### Bi-O Tec

- Combination wall mounted heater with laterally integrated evaporator pouch.
- Outer casing made of polished stainless steel or with anthracite pearl effect.
- High quality aluminium die casting cover.
- Interior lining made of stainless steel.
- Herb bowl to accommodate herbs, essential oils and essences.
- Integrated dry walkway and acoustic low water alarm.

Product name	Colour	Outer dimensions (H x W x D)	Connection	Power	Art. No.
Bi-O Mini	Stainless steel	660 x 300 x 215 mm	230 V 1N AC	3.0 kW*	92.2444
Bi-O Filius	Anthracite pearl effect	575 x 470 x 240 mm	400 V 3N AC	4.5 kW**	94.5144
				6.0 kW***	94.5145
				7.5 kW***	94.5146
Bi-O Tec	Anthracite pearl effect	760 x 450 x 380 mm	400 V 3N AC	6.0 kW***	94.2605A
				7.5 kW****	94.2606A
				9.0 kW****	94.2607A
Bi-O Tec	Stainless steel	760 x 450 x 380 mm	400 V 3N AC	6.0 kW***	94.2608A
				7.5 kW****	94.2609A
				9.0 kW****	94.2610A

\* Evaporator power 0.75 kW

\*\* Evaporator power 1.0 kW

\*\*\* Evaporator power 1.5 kW

\*\*\*\* Evaporator power 2.0 kW



## :: Bi-O SAUNA HEATERS AND ACCESSORIES

### Classic



#### Design mounting bracket with herbal pot

- Elegantly curved mounting bracket. Completely made of stainless steel.
- Extends your sauna bathing options. To be used with the sauna heaters: Germanius and Bi-O Germanius.
- This accessory also fits on the following sauna heaters: Bi-O Max, Bi-O Tec, Fin-Tec and Euro-Max.

#### Residual water drip pan

- Plastic drip pan.
- For collecting residual water from the evaporator.



#### FWA 01 Compact

##### Fixed water connection

- Mounted on heater with evaporator for automatic filling of the evaporator from the water mains system.
- Mounted on back.
- Steel flexible hose.
- 12" thread connection.



#### Additional evaporator

- Space-saving; can also be retrofitted for available sauna systems.
- Water fill quantity approx. 5 l.
- Power 2 kW.
- Suitable for sauna cabins up to Approx. 14 m³ cubic content.
- Acoustic low water alarm including dry walkway protection.
- Integrated bowl for herbs.
- Outer casing made of stainless steel.

Product name	Colour	Art. No.
Design mounting bracket with herbal pot	Stainless steel	94.4221
Residual water drip pan	Plastic	94.5425
FWA 01 Compact fixed water connection		94.4845
Additional evaporator	Stainless steel	94.4742

## :: SAUNA HEATERS

**Premium**



**Germanius**

- Luxury floor-standing heater for private and commercial saunas.
- Optimized ratio of radiation / convection heat due to the large stone volume of 60 kg.
- Service-friendly due to the modular design.
- Stylish side parts made of aluminium profiles.
- Front side made of quartz glass with an atmospheric optical chimney effect.
- Top part made of stainless steel.
- Reeling bracket to install a heater available as an option.



**Goliath 34.G II, Professional**

- Floor-standing heater for commercial saunas.
- Highly robust and reliable.
- Triple casing technology and large stone basket with approx. 75 kg stone volume.
- Elegant design in anthracite pearl effect. Completely made of stainless steel.
- Optimized radiation heat and convection.
- Highly service-friendly and durable.
- Available in the output capacities 18.0 / 24.0 / 30.0 / 36.0 kW.

### FOR SOPHISTICATED GUESTS.

With our straight-forward heater design for cabins with maximum volume, sauna guests can really enjoy breaking out in a sweat.

The heaters are produced in innovative triple casing technology. This reduces side heat radiation to a minimum. Float mounted outer casings also permit low-noise heat-up. The sauna bodies and the stone containers are made of stainless steel. The base and floor of the rectangular or hexagonal models are constructed as drip pans to collect water. The convection capability of the heaters with up to 36 kW capacity is superb and guarantees optimised air exchange.



Product name	Colour	Outer dimensions (H x W x D)	Connection	Power	Art. No.
Germanius	Anthracite pearl effect	918 x 618 x 510 mm	400 V 3N AC	12.0 kW	94.3931
				15.0 kW	94.3932
				18.0 kW	94.3933
Heater guard bracket for the Germanius					94.4356
Goliath 34.G II	Anthracite pearl effect	825 x 960 x 470 mm	400 V 3N AC	18.0 kW	94.4805
				24.0 kW	94.4806
				30.0 kW	94.4807
				36.0 kW	94.4808
Heater guard bracket for the Goliath 34.G II					94.5067



## :: SAUNA HEATERS

**Premium**



### Euro-Max

- Floor-standing heater for private and commercial saunas.
- Perfect ratio between the amount of stones and convection.
- Highly robust and reliable.
- Triple casing technology with Stainless steel basket for sauna stones.
- Cover made from aluminium die-casting.
- The stone basket is positioned above the heating elements, which do not come into contact with the sauna stones.
- Service-friendly due to the modular design.
- Stone filling approx. 60 kg.

### Saunadome

- Floor-standing heater for private and commercial saunas.
- Ideal for central placement or for glass surface set-up
- Attractive upright design with wide-banded mesh.
- Corner posts in anthracite pearl effect
- Visible basket for stones.
- Extremely large heat storage capacity.
- Large stone basket with approx. 125 kg stones.
- Adjustable legs.



### 46.U Rear wall mounted heater, Professional

- Floor-standing heater for private and commercial saunas.
- Interior lining and outer casing made of stainless steel.
- Stone basket with pouring bowl over the entire heater width.
- Inc. pouring funnel with extension hose and connection cable.
- Very flat, only 200 mm installation depth. Also available as **46.U Compact** with only 920 mm width and 7.5 kW.
- Inc. safety grid.

Product name	Colour	Outer dimensions (H x W x D)	Connection	Power	Art. No.
Euro-Max	Anthracite pearl effect	900 x 500 x 500 mm	400 V 3N AC	9.0 kW	94.2320
				12.0 kW	94.2321
				15.0 kW	94.3882
Heater guard bracket for the Euro-Max					94.4595
Saunadome	Anthracite pearl effect	1000 x 400 x 400 mm	400 V 3N AC	9.0 kW	94.4981
				12.0 kW	94.4859
				15.0 kW	94.4860
				18.0 kW	94.4861
Heater guard bracket for the Saunadome					94.5323
46.U	Stainless steel	870 x 1120 x 200 mm	400 V 3N AC	6.0 kW	94.4887
				7.5 kW	94.4888
				9.0 kW	94.4889
				12.0 kW	90.8608

## COMMERCIAL SAUNA HEATERS WITH EVAPORATORS



**Bi-O Max**

- Combination floor-standing heater and evaporator for family, hotel and commercial saunas.
- Evaporator installed at the side with large water level indicator.
- Optimized ratio of radiation and convection heat due to the large quantity of 60 kg stones. and the related powerful sauna infusion.
- Cover and front plate made of aluminium die-casting.
- Air intake openings on stone basket lie over the heating elements.
- Service-friendly due to the modular design.



**Bi-O Germanius**

- Luxury floor-standing heater for private and commercial saunas.
- Optimized ratio of radiation and convection heat due to the large quantity of 60 kg stones.
- Evaporator installed at the side with fixed water connection.
- Stylish side parts made from aluminium profiles.
- Front side made of quartz glass with atmospheric optical chimney effect.
- Top part made of stainless steel.
- Reeling bracket to install a heater available as an option.



**Bi-O Mat U Rear wall mounted heater**

- Combination rear wall mounted heater with side-integrated evaporator pan.
- Particularly flat – only 200 mm installation depth.
- Outer casing and interior lining made entirely of stainless steel.
- Floor plate designed as drip pan.
- Pouring funnel with silicone extension.
- Stainless steel herb bowl including acoustic low-water alarm.
- Inc. safety grid.



**Bi-O Star, Professional**

- Combination floor-standing heater with evaporator for commercial saunas.
- Enormously robust thanks to the triple casing construction. Completely made of stainless steel.
- Evaporator integrated at the side, made of stainless steel with 5 or 10 litres (21 - 30 kW) water tank.
- Evaporator integrated dry walkway und acoustic low-water alarm.

### Premium

#### YOUR ADVANTAGES FROM EOS SAUNA HEATERS WITH EVAPORATORS.

- For cabins with the greatest volume.
- All models may be combined with one another.
- Capacity up to 30 kW.
- Minor lateral heat emission.
- Low-noise heating.
- Cost-effective connection method.
- Body made from stainless steel.
- Stone container made of stainless steel.

Product name	Colour	Outer dimensions (H x W x D)	Connection	Power	Art. No.
Bi-O Max	Anthracite pearl effect	900 x 500 x 500 mm	400 V 3N AC	9.0 kW***	94.2317
				12.0 kW***	94.2318
				15.0 kW***	94.3922
Heater guard bracket for the Bi-O Max					94.4595
Bi-O Germanius	Anthracite pearl effect	918 x 618 x 510 mm	400 V 3N AC	9.0 kW***	94.3926
				12.0 kW***	94.3927
				15.0 kW***	94.3928
				18.0 kW****	94.3929
Heater guard bracket for the Bi-O Germanius					94.4356
Bi-O Mat U Evaporator on left-hand side	Stainless steel	1000 x 1120 x 200 mm	400 V 3N AC	6.0 kW *	94.4890
				7.5 kW*	94.4891
				9.0 kW*	94.4892
				12.0 kW*	94.1127
Bi-O Star / Size 1	Stainless steel	950 x 750 x 530 mm	400 V 3N AC	15.0 kW***	94.2587
				18.0 kW***	94.2588
Bi-O Star / Size 2	Stainless steel	950 x 1000 x 530 mm	400 V 3N AC	21.0 kW**	94.2589
				24.0 kW**	94.4079
				30.0 kW**	94.3037
Stacking frame size 1 (stone basket enlargement)					94.4000
Stacking frame size 2 (stone basket enlargement)					94.4001

- \* Evaporator power 1.5 kW
- \*\* Evaporator power 2 x 2.0 kW
- \*\*\* Evaporator power 2.0 kW
- \*\*\*\* Evaporator power 2.0 kW / to be used with power switchgear 18.



## :: MILLWHEEL SAUNAS

**Premium**

### SAUNA FUN SPECIALISTS.

Themed saunas or infusions - the exclusive millwheel heater ensures variability and a bit of "action" in your sauna system. The large millwheel turns slowly anti-clockwise. After an automatic or manual signal, it then turns in the opposite direction so that the scoops bring the water directly onto the cascade over the heater, resulting in a series for effective and powerful infusions.

The large stone volume ensures particularly even radiation heat and heat storage capacity.

### Millwheel sauna and 34.GM sauna heater

- High-end sauna heater for luxury class themed saunas.
- Turning millwheel for innovative event pouring in Finnish
- saunas at preselected intervals. The infusion takes place when the wheel turns clockwise.
- Inc. drive, control electronics and fixed water connection FWA 01 for the automatic water supply.
- Optional digital pouring display or remote control module for manual pouring.
- Exclusive 34.GM sauna heater made of stainless steel, triple casing construction.
- Two construction sizes: 18 kW (30 kg stones) and 27 - 36 kW (45 kg stones).
- Front made of solid granite.
- Own logo possible (subject to additional charge).

Product name	Outer dimensions (H x W x D)	Connection	Power	Art. No.
Set millwheel sauna and 34.GM size 1	950 x 750 x 530 mm	400 V 3N AC	18.0 kW	94.3076
Set millwheel sauna and 34.GM size 2	950 x 1000 x 530 mm	400 V 3N AC	27.0 kW	94.3092
			30.0 kW	94.5149
			36.0 kW	94.3093
Millwheel and control unit / required				94.3077
Digital pouring display				94.4443
Remote control module for manual pouring				94.4087

## STEAM TECHNOLOGY

**Premium**

### Steam generator SteamTec Classic

- High-performance steam generator (IPX4) for commercial use.
- Basic version.
- As SteamTec Premium, but
  - without digital control,
  - without fragrance dosage system,
  - without coloured light control,
  - without accessories set.
- Ideal for power extension of SteamTec Premium or as an external evaporator for commercial sauna heaters.
- Separate control unit required.

### Steam generator SteamTec Premium

- High-performance steam generator (IPX4) for commercial use.
- With digital control for temperature, time, fragrance, RGB / LED coloured light, light, supply air and exhaust air and an automatic cleaning function (flush and descale).
- The control can be installed directly into the steam bath (in-wall installation).
- Automatic cleaning and descaling.
- Integrated dosing system for fragrances.
- Integrated coloured light control for RGB LED lamps.
- Heating time limitation 30 min, 45 min, 4 h or without limitation.
- Connection for light, supply air and exhaust air fan.
- 2 free outputs (230 V / 2 A).
- 2 access levels (Guest and operator / Service).
- Compact housing for wall installation.
- Extremely robust construction. Water tank made of stainless steel.
- Service-friendly, easy maintenance.
- Set consisting of:
  - Steam generator, multi-function control with 7 m cable, steam jet, descaling container (without medium), temperature sensor, assembly kit.

Product name	Outer dimensions (H x W x D)	Steam/hour	Cabin volume	Power	Art. No.
Steam generator SteamTec Classic (Basic version) (Connection: 400 V 3N AC)	600 x 320 x 330 mm	6 kg / hour	2.5 - 4.0 m <sup>3</sup>	4.5 kW	94.4367
	600 x 320 x 330 mm	8 kg / hour	3.0 - 5.0 m <sup>3</sup>	6.0 kW	94.4368
	600 x 320 x 330 mm	12 kg / hour	5.5 - 10 m <sup>3</sup>	9.0 kW	94.4369
	650 x 390 x 380 mm	16 kg / hour	9.5 - 12 m <sup>3</sup>	12.0 kW	94.4556
	650 x 390 x 380 mm	20 kg / hour	11.5 - 15 m <sup>3</sup>	15.0 kW	94.4557
	650 x 390 x 380 mm	24 kg / hour	14.5 - 18 m <sup>3</sup>	18.0 kW	94.4558
Steam generator SteamTec Premium (Set version) (Connection: 400 V 3N AC)	600 x 320 x 330 mm	6 kg / hour	2.5 - 4.0 m <sup>3</sup>	4.5 kW	94.4370
	600 x 320 x 330 mm	8 kg / hour	3.0 - 5.0 m <sup>3</sup>	6.0 kW	94.4371
	600 x 320 x 330 mm	12 kg / hour	5.5 - 10 m <sup>3</sup>	9.0 kW	94.4372
	650 x 390 x 380 mm	16 kg / hour	9.5 - 12 m <sup>3</sup>	12.0 kW	94.4559
	650 x 390 x 380 mm	20 kg / hour	11.5 - 15 m <sup>3</sup>	15.0 kW	94.4560
	650 x 390 x 380 mm	24 kg / hour	14.5 - 18 m <sup>3</sup>	18.0 kW	94.4561

## :: SAUNA SAFETY

*Classic*

### Cover guard

- Safety cover for sauna heaters.
- Automatic switch-off for wall installation as an extended safety function under pressure influences.
- If the cover guard is pressed down by an object, the heating process is stopped, the object is removed, and operation is continued.
- Different sizes and variants are available (with the respective appropriate sauna heater after consultation).
- Simple installation, universal fit.
- Subsequent installation easily possible.



**Type 1**  
140 x 328 x 322 mm



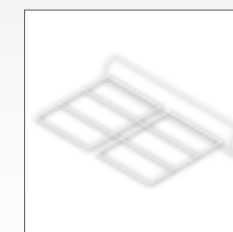
**Type 2**  
140 x 728 x 322 mm



**Type 3**  
140 x 728 x 322 mm



**Type 4**  
140 x 328 x 482 mm



**Type 5**  
140 x 728 x 482 mm

### COVER GUARD

A towel or sauna pail left inadvertently on the heater can quickly lead to fires with severe consequences.

EOS safety systems such as the switch-off rocker switch or the S-Guard assist you in minimising these risks effectively and inexpensively.

You have a wonderful sauna - protect your valuable investment!



Product name	Outer dimensions (H x W x D)	Art. No.
Cover guard Type 1	140 x 328 x 322 mm	94.4421
Cover guard Type 2	140 x 728 x 322 mm	94.4421
Cover guard Type 3	140 x 728 x 322 mm	94.4425
Cover guard Type 4	140 x 328 x 482 mm	94.4724
Cover guard Type 5	140 x 728 x 482 mm	94.4725



## :: S-GUARD – SAUNA SAFETY

*Premium*



S-GUARD

### Temperature monitoring system

It has become common to start both commercial and private sauna heaters using remote start. Yet what happens if the sauna heater is remote started and a forgotten object is left lying on the heater? How can we most efficiently avoid existing fire risks? How can we most efficiently avoid existing fire risks?

We have studied these questions intensively and can now present a market innovation, the **S-GUARD**, an innovative tool consisting of an electronically-controlled "black box" and two temperature sensors. The **S-GUARD** functions extremely reliably and is able to detect a possible risk of fire in the heat-up phase.

### Function and equipment

The patented **S-GUARD** solution is mounted outside the sauna, for example in the technology room, and is electronically connected with the two temperature sensors in the cabin. During installation, the **S-GUARD** is already calibrated to the different sauna modes, meaning that relevant data such as temperature curves are recorded and saved. Here the two temperature sensors PT1000

are located directly over the sauna heater. When the heater is switched on, the sensors automatically record the temperature development. If the values deviate even slightly from the calibrated temperature records, the heat-up procedure is stopped within a few seconds. This prevents a fire from starting. The sauna control safety circuit is interrupted through a floating contact.

The innovative **S-GUARD** is the first tool of its kind on the market and is a welcome additional for all sauna bathers. It is not only the optimal sauna for private users, but also for hotels or fitness studios with spa landscapes. The new **S-GUARD** provides top class safety and reliability.

The **S-GUARD** has a status display with three LEDs; the voltage supply totals 230V AC.

The new **S-GUARD** is certified and is produced acc. DIN EN 60335-1.

Product name	Art. No.
<b>S-GUARD.</b> Safety and temperature monitoring system for sauna systems. Inc. control unit and temperature sensor PT1000 with cable.	94.5256

Note on safety:  
The S-GUARD system cannot provide 100% safety or replace the visual check on the sauna cabin prior to switch-on.



1 You wish to switch on your sauna quickly whilst underway, or from a distance?



2 Now imagine that for example a towel has been left on the sauna heater. That can happen occasionally.



3 That would quickly lead to a sauna fire.



4 And may also lead to a large-scale house fire with catastrophic results.



5 What should you do? The S-GUARD solutions means that you don't have to do without these convenient functions!



6 S-GUARD can be installed into both new and pre-existing saunas, to make them safer.



7 Normally, the S-GUARD works unnoticed in the background and monitors the heating procedure.



8 If the heater is covered, S-GUARD stops the heating procedure immediately and prevents a fire.

## :: SAUNA CONTROL UNITS THE ECON SERIES.

**Basic**

**Classic**

**Basic**

### ECON D1, Sauna control unit

- Electronic control unit for sauna.
- Digital temperature regulation between 40 °C and 115 °C.
- Heating time limitation 6 h.
- LCD display (times, settings, functions).
- Menu guide in multiple languages
- Simple operation thanks to clear text display.
- Connection for light.
- Key pad lock (child protection).
- "Lifeguard" function (automatic switch-off).
- Switching capacity 9 kW.
- Wall installation or in part recessed installation.
- Inc. temperature sensor with 2 m cable.

**Basic**

### ECON H1, Sauna control unit

- Electronic control unit for dry saunas and saunas with humidity operation.
- Digital temperature regulation: 40 °C - 115 °C (sauna) and 30 °C - 70 °C (humidity operation).
- Humidity regulation in 10 stages.
- Heating time limitation 6 h.
- LCD display (times, settings, functions).
- Menu guide in multiple languages
- Simple operation thanks to clear text display.
- Connection for light and fan.
- Key pad lock (child protection)
- "Lifeguard" function (automatic switch-off).
- Switching capacity 9 kW.
- Wall installation or in part recessed installation.
- Inc. temperature sensor with 2 m cable.

**Classic**

### ECON D2, Sauna control unit

- Electronic control unit for dry Finnish saunas
- Digital temperature regulation 40 °C - 115 °C.
- Heating time limitation 6h, can be extended to 12 h.
- With 24 hr real time clock and preselected time clock.
- Large, multi-line LCD display.
- Menu guide in multiple languages
- Easy operation – settings and function visible at a glance. Clear text display.
- Connection for light.
- Key pad lock (child protection).
- "Lifeguard" function (automatic switch-off).
- Switching capacity 9 kW, extendable with power switchgear.
- Wall installation or in part recessed installation.
- Inc. temperature sensor with 2 m cable.

**Classic**

### ECON H2, Sauna control unit

- Electronic control unit for dry saunas and saunas with humidity operation.
- Digital temperature regulation: 40 °C - 115 °C (sauna) 30 °C - 70 °C (humidity operation).
- Humidity regulation in 10 stages.
- Heating time limitation 6h, can be extended to 12 h.
- With 24 hr real time clock and preselected time.
- LCD display (times, settings, functions).
- Menu guide in multiple languages
- Simple operation thanks to clear text display.
- Connection for light and fan.
- Key pad lock (child protection)
- "Lifeguard" function (automatic switch-off).
- Switching capacity 9 kW, extendable with power switchgear.
- Wall installation or in part recessed installation.
- Inc. temperature sensor with 2 m cable.

### SAUNA CONTROL UNITS.

EOS controls are the perfect supplement to EOS sauna heaters and EOS evaporator systems. Sauna temperature and humidity can always be controlled accurately and comfortably. They are available in different design variations and leave almost nothing to be desired due to their functional diversity. In terms of reliability, too, EOS control units set the standards on the market. All units accord with the latest standards, and most of them are VDE-tested.

Model	Type	Time preselection	Heating time	Light / Fan	Dimensions (H x W x D)	Connection	Art. No.
Econ D1	Dry	-	6 hours	Yes / No	220 x 250 x 60 mm	400 V 3N AC 50	94.5202
Econ H1	Dry/humid	-	6 hours	Yes / Yes	220 x 250 x 60 mm	400 V 3N AC 50	94.5203
Econ D2	Dry	24 hours	6 / 12 hours	Yes / No	220 x 250 x 60 mm	400 V 3N AC 50	94.5204
Econ H2	Dry/humid	24 hours	6 / 12 hours	Yes / Yes	220 x 250 x 60 mm	400 V 3N AC 50	94.5205





# :: SAUNA CONTROL UNITS THE EMOTEC®-SERIES.

Classic

Premium

Classic

Classic

Premium

Premium

## EMOTEC® DC 9000 DLF (Finnish) and EMOTEC® HCS 9003 DLF (Bi-O)

- Exclusive sauna control unit with flat separate control panel for flush mounting.
- Panel frame for surface mounting of the control panel available as an option.
- 4 m data cable (control panel - power unit) included in delivery (15 m optional).

**EMOTEC® DC 9000 DLF – Sauna control unit for dry Finnish saunas. Functions as on the DC 9000.**  
**EMOTEC® HCS 9003 DLF – Sauna control unit for dry saunas and saunas with humidity operation. Functions as on the HCS 9003.**

### EMOTEC® DC 9000 Sauna control unit

- Electronic control unit for dry Finnish saunas
- Digital continuous temperature regulation 30 °C - 110 °C.
- Heating time limitation 6 hours 12 hours or none (commercial use).
- Large "Jumbo" LCD display.
- Extra-large digits - highly legible.
- Time and preselection timer in 24 hr real time.
- Week timer with 4 switching times per day (commercial use).
- Connection for dimmable cabin light.
- Connection for fan (regulatable).
- Switching capacity 9 kW, extendable with power switchgear.
- Coloured light control (optional).
- 2nd temperature sensor (bench sensor, optional).
- Remote start (optional).

### EMOTEC® HCS 9003, Sauna control unit

- Electronic control unit for dry Finnish saunas and saunas with humidity operation.
- Digital continuous temperature regulation 30 °C - 70 °C in humidity operation, 30 °C - 110 °C in sauna operation.
- Humidity regulation via cycle preselection or according to the relative humidity with the optional humidity sensor.
- Heating time limitation 6 h/ 12 h or none (commercial use).
- Reheat function (dry mode).
- "Jumbo "LCD display with 24 hr real time clock and preselected time clock.
- Week timer with 4 switching times per day (commercial use).
- Connection for dimmable cabin light and fan. (regulatable).
- Switching capacity 9 kW, extendable with power switchgear.
- Evaporator power 3 kW.
- Coloured light control (optional).
- 2nd temperature sensor (bench sensor, optional).
- Remote start (optional).

Product name	Outer dimensions (H x W x D)	Connection	Art. No.
EMOTEC® DC 9000 Sauna control unit	240 x 230 x 70 mm	400 V 3N AC 50 Hz	94.4674
EMOTEC® HCS 9003 Sauna control unit	240 x 230 x 70 mm	400 V 3N AC 50 Hz	94.4675
EMOTEC® DC 9000 DLF Sauna control unit for dry Finnish saunas	Control panel 145 x 180 x 40 mm Power unit: 240 x 230 x 70 mm	400 V 3N AC 50 Hz	94.4639
EMOTEC® HCS 9003 DLF Sauna control unit for dry saunas and saunas with humidity operation	Control panel 145 x 180 x 40 mm Power unit: 240 x 230 x 70 mm	400 V 3N AC 50 Hz	94.4640
Accessories:			
F2 Air humidifier			94.4389
Bench sensor (2nd temperature sensor)			94.4389
Remote start button (without cable)			94.4645
GSM Remote start module			94.4671
Phase dimming module (for LED / halogen lamps)			94.4670
Phase dimming module (for energy-saving lamps)			94.4669

# :: SAUNA CONTROL UNITS

## THE EMOTOUCH SERIES.

Premium



EMOTOUCH II PB



EMOTOUCH II AF

### EMOTOUCH II

- Luxury sauna controls for sophisticated users.
  - Ideal for high-quality private and commercial saunas.
  - Large colour 5" touchscreen display.
  - Graphic user interface with innovative operation.
  - For classic Finnish saunas and saunas with humidity operation.
  - Quick access to all important functions.
  - Continuous control: 30 °C - 70 °C in humidity operation, 30 °C to 110 °C in sauna operation.
  - Humidity cycle preselection or according to the relative humidity with optional humidity sensor.
  - Heating time limitation 6 h/ 12 h or no limitation of heating time.
- Reheat function (adjustable time).
  - 24-hour time preselection or weekly timer (4 switching times / day).
  - 8 user profiles with quick access.
  - Connection for light (dimmable) and fan. (regulatable).
  - 3 access levels (Guest, Operator, Service).
  - Display lock (child protection / hotel mode).
  - Integrated interactive help in 10 languages.
  - Optional coloured light module and bench sensor.
  - Optional sound module (stereo) and remote start.
  - Available as a flush mounting variant with exclusive aluminium frame and surface mounting variant in EMOTEC® Design. 2 m connection cable (control panel to power unit) included.

Product name	Outer dimensions (H x W x D)	Connection	Art. No.
EMOTOUCH II PB	Control panel: 170 x 175 x 40 mm Power unit: 240 x 230 x 70 mm	400 V 3N AC 50 Hz	94.4642
EMOTOUCH II AF	Control panel: 170 x 175 x 40 mm Power unit: 240 x 230 x 70 mm	400 V 3N AC 50 Hz	94.4643

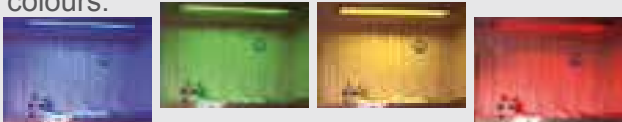
# :: COLOURED LIGHT TECHNOLOGY

Premium

## COLOURED LIGHT UNITS - THE MODE OF ACTION OF COLOURS.

The psychological influence of colours is transmitted via the eyes. The perception of colour radiation is sent to the brain, where it unfolds its effect.

Colour absorption through the nerves leads to a revival of the body's resistance. Depending on the type of colour, certain body systems are activated. The physical absorption is mainly carried out through the skin. The chemical absorption is carried out through the gastrointestinal tract in the form of a mixed diet of all the colours.



### Emolux 1000, 2000, 2001 Coloured light unit

- Innovative coloured light system with LED technology.
  - Brilliant colour rendering.
  - Full-surface, highly even illumination.
  - Very flat housing with a robust frame made of high-quality, solid beech.
  - Ready for connection - quick, easy installation.
  - Easy to operate thanks to IR remote control.
- Gentle colour transitions.
  - With individual or mixed colours, automatic colour run in defined programs (e.g.: 1 or 4 minutes per colour or "Sunrise").
  - Completely maintenance-free.
  - Available in 3 sizes.

Product name		Outer dimensions (H x W x D)	Connection	Art. No.
EMOLUX 1000	For use in IR cabins, max. ambient temperature: 100 °C	290 x 290 x 37 mm	230 V N AC 50 Hz / 10.8 W	94.5370
EMOLUX 2000		520 x 290 x 37 mm	230 V N AC 50 Hz / 21.6 W	94.5308
EMOLUX 2001		1040 x 290 x 37 mm	230 V N AC 50 Hz / 43.2 W	94.5307
EMOLUX 2000-S with installation frame for saunas		520 x 290 x 37 mm*	230 V N AC 50 Hz / 21.6 W	94.5447
EMOLUX 2001-S with installation frame for saunas		1040 x 290 x 37 mm*	230 V N AC 50 Hz / 43.2 W	94.5448

\* Dimensions without installation frame.



## :: INFRARED TECHNOLOGY

### Basic

### Classic

### Premium

### Infrared heating foils

- Infrared heating foil for saunas and for infrared cabins.
- Free of heavy metals.
- With safety thermostat at 120 °C.
- Available in different sizes and capacities: 650 / 550 / 450 / 350 / 275 / 90 W.

### InfraSteam extra evaporator

- Extra evaporator for the IR cabin with integrated control unit.
- Filling and steam outlet via removable herbal screen.
- Low-water monitoring, including dry walkway and low water buzzer.
- Water tank approx. 2 l, complete made of stainless steel.
- Inc. connection cable (ready to plug in).
- Very flat.
- Easy, simple installation.
- 750 W evaporator power.

### InfraStar infrared module

- Infrared heater for IR heat cabin.
- Integrated 400 or 600 W ceramic heater with burnt-in heating coil.
- Long-wave spectrum approx. 2-10 µm.
- Protective flock-coated cover grid.
- Completely pre-assembled with 3 m silicone connection cable 3 x 1.5 mm².
- Installation optional in a 90° corner or in the wall element.
- Optional accessory: corner facing panel for infrared heater.

### IRS 4 RHK Infrared heater

- Infrared heater for IR heat cabin.
- With 400 W magnesium oxide heater.
- Long-wave spectrum approx. 2-10 µm.
- Reflector made of high-gloss polished aluminium.
- Protective flock-coated cover grid.
- Completely pre-assembled with 3 m silicone connection cable 3 x 1.5 mm².
- Installation optional in a 90° corner or in the wall element.
- Optional accessory: corner facing panel for infrared heater.

### Vitae 350/500/750 infrared heater

- Infrared heater for infrared heat cabin.
- Installed 350 W / 500 W or 750 W Vitae quartz heater.
- Infrared spectrum similar to the sun 1.4 - 10 µm.
- Reflector made of high-gloss polished aluminium.
- Housing made from chromium steel.
- Protective flock-coated cover grid.
- Completely pre-assembled with 3 m silicone connection cable 3 x 1.5 mm².
- Installation optional in a 90° corner or in the wall element.
- Optional accessory: Corner facing for infrared heater.

### IRS 3 Ceramic infrared heater

- Infrared heater for IR heat cabin.
- Built-in 300 W ceramic heater.
- Long-wave spectrum approx. 2-10 µm.
- Reflector made of high-gloss polished aluminium.
- Protective flock-coated cover grid.
- Completely pre-assembled with 3 m silicone connection cable 3 x 1.5 mm².
- Installation optional in a 90° corner or in the wall element.
- Optional accessory: Corner facing for infrared heater.

### IRS 35 / IRS 50 RHK Infrared heater

- Infrared heater for IR heat cabin.
- With 350 or 500 W magnesium oxide heater.
- Long-wave spectrum approx. 2-10 µm.
- Protective flock-coated cover grid.
- Completely pre-assembled with 3 m Silicone mains cable 3 x 1.5 mm².
- Installation optional in a 90° corner or in the wall element.
- Optional accessory: corner facing for infrared heater.

### IR-RAYS - POSITIVE HEAT.

IR-rays are not visible to the human eye and heat the skin without using the air in the room as medium. This means that the heat cabins do not require a long heating time. The rays are absorbed by the skin and by the objects that are touched, providing fast and comforting warmth.

EOS infra red technology features high reliability, safety and flexibility.

Product name	Outer dimensions (H x W x D)	Connection	Art. No.
InfraStar infrared module	737 x 180 x 60 mm	230 V N AC 50 Hz	94.5170
IRS 4 RHK infrared heater	530 x 185 x 65 mm	230 V 3N AC 50 Hz, 400 W	94.2862
IRS 3 ceramic infrared heater	530 x 185 x 65 mm	230 V 3N AC 50 Hz, 300 W	94.1878
IRS 35 RHK infrared heater	870 x 185 x 65 mm	230 V 3N AC 50 Hz, 350 W	94.4305
IRS 50 RHK infrared heater	870 x 185 x 65 mm	230 V 3N AC 50 Hz, 500 W	94.4306
Infrared heating foil 650 W	1700 x 800 mm	230 V N AC 50 Hz	94.3742
Infrared heating foil 550 W	1450 x 800 mm	230 V N AC 50 Hz	94.3743
Infrared heating foil 450 W	1600 x 600 mm	230 V N AC 50 Hz	94.3744
Infrared heating foil 350 W	1250 x 600 mm	230 V N AC 50 Hz	94.3745
Infrared heating foil 275 W	1600 x 400 mm	230 V N AC 50 Hz	94.3835
Infrared heating foil 90 W	600 x 300 mm	230 V N AC 50 Hz	94.4140
Vitae 350 W	870 x 185 x 65 mm	230 V N AC 50 Hz	94.2865
Vitae 500 W	870 x 185 x 65 mm	230 V N AC 50 Hz	94.2576
Vitae 750 W	870 x 185 x 65 mm	230 V N AC 50 Hz	94.2577
InfraSteam extra evaporator	570 x 230 x 110 mm	230 V N AC 50 Hz	94.4140



## :: INFRARED TECHNOLOGY

**Classic**

**Premium**



**Infratec Classic  
Infrared control unit**

- Electronic control unit for IR heat cabins.
- Flush mounting.
- Temperature regulation range 30 °C - 70 °C.
- LCD display with clear text.
- Safety temperature limiter.
- Heating time limitation 1 - 99 minutes.
- Completely pre-assembled with mains cable with Schuko connector, silicone line for cabin lighting and connecting cable for IR-heat radiator.
- With temperature sensor.
- Max. switching capacity 3,500 W.



**Infratec Premium  
Infrared control unit**

- Electronic control unit for IR heat cabins.
- Temperature regulation range 30 °C - 70 °C.
- LCD display with clear text.
- 3 separate circuits (rear, front and leg heater).
- 2 circuits, individually dimmable.
- Leg heater, can be switched off.
- Heating time limitation 99 min / 12 hours
- Light switch.
- Flush mounting.
- Safety temperature limiter.
- With temperature sensor.
- Max. switching capacity 3,500 W.



**Premium**

**InfraTouch infrared and sauna control unit**

- Luxury class control unit with touchscreen display.
- Two in one: Control unit for sauna and infrared
- High resolution, colour 3.5" touchscreen display.
- Graphic user interface.
- Digital temperature regulation: 30 °C - 80 °C in infrared operation (with pre-heating function) 30 °C - 110 °C in sauna operation (Finnish) 30 °C - 70 °C in humidity operation (Bi-O)
- Humidity regulation acc. cycle preselection.
- Heating time limitation: 6 hours / 12 hours / unlimited
- 24-hour time preselection.
- Connection for light (dimmable) and fan (regulatable)
- Coloured light control (optional) and remote start (optional).
- 2 user levels (Guest and Operator / Service).
- Integrated interactive help (in 10 languages).
- Compact control panel with aluminium frame for flush mounting and separate power unit.
- Also available as "radio" version - control panel with wireless connection to the power unit.
- Max. switching capacity 3,300 W.



**InfraSky 3000 infrared heater**

- Infrared unit for fastening to the ceiling in private and professional use (e.g. spa landscapes).
- Quick, pleasant warmth at the touch of a button.
- Top performances with 6 x 500 W IR-emitters.
- Exclusive, attractive design, high-quality processing.
- Service-friendly and easy to install.
- Pure relaxation and a feeling of freedom and openness due to the generous spacing of devices to the customer.
- Different designs and accessories such as time control, suspension, lift system and rattan bed "RELAX" optional.

Product name	Outer dimensions (H x W x D)	Connection	Art. No.
Infratec Classic, IR control unit without cable set	140 x 195 x 50 mm	230 V 3N AC 50 Hz	94.4388
Infratec Classic, IR control unit with cable set	140 x 195 x 50 mm	230 V 3N AC 50 Hz	94.4334
Infratec Premium infrared control unit	Control panel 130 x 118 x 24 mm	230 V 3N AC 50 Hz	94.5255
InfraTouch infrared / sauna control unit	Control panel 130 x 100 x 20 mm	230 V N AC 50 Hz	94.4672

Product name	Outer dimensions (H x W x D)	Connection	Art. No.
InfraSky 3000 in pearl grey; RAL 9022	2100 x 650 x 285 mm	3000 W / 230 V / 1 x 16 A	94.4307
InfraSky 3000 in black; RAL 9011	2100 x 650 x 285 mm	3000 W / 230 V / 1 x 16 A	94.4315



## :: SAUNA ACCESSORIES



### Sauna infusion flower

- Sauna infusion flower with continuously adjustable drop valve.
- For direct installation over the sauna heater.
- Made of reddish, grained ceramic.
- Inc. ceiling hook and 1 m suspension chain made of stainless steel.
- Contents approx. 300 ml.



### Multicup

- With the Multicup you have the option of bringing even more nature and wellness into the cabin.
- Can be used for example with Himalayan salt crystals salt brines, dissolved herbs etc.
- The Multicup has a diameter of 16 cm and a fill quantity of approx. 0.6 litres.
- Delivery includes approx. 1 kg original Himalayan salt crystals.



### Sauna steam and infusion stone

- Steam and infusion stone with 4 water funnels.
- Water content approx. 60 ml.
- For a mild and even infusion.



### Sauna robe

- Sauna robe in various sizes (S - XXL).
- With pocket and belt.
- High-quality robe, made of 100% pure cotton.
- With woven sauna logo.
- Washable at 40 or 60 °C.



### Sauna towel

- High-quality towel, made of 100% pure cotton.
- With woven sauna logo.
- Washable at 40 or 60 °C.
- Towel size: 700 x 2000 mm.



### Original Himalayan salt crystals

- Himalayan salt for health, beauty, vitality and vigour.
- It originates from the drying of the ancient seas during the Permian Age.
- Himalayan salt is free from contaminations caused by environmental influences.
- To be used as crystal for ion emission or to produce brine.
- Unit approx. 1 kg.



### Original Himalayan salt crystals

- Himalayan salt bricks for sauna, Saline pools, salt caves etc.
- Dimensions approx. 200 x 100 x 50 mm.
- Type 1: All sides cut smooth.
- Type 2: Front side broken (natural).
- Packaging unit 10 bricks each.

Product name	Outer dimensions (H x W x D)	Size / Colour	Art. No.
Sauna steam and infusion stone	80 x 80 x 60 mm		94.5239
Multicup	Ø 160 mm		94.2534
6-set Multicup	Ø 160 mm		94.3088
Original Himalayan salt crystals, approx. 1 kg			94.2630
Himalayan salt brick: Type 1, cut smooth	200 x 100 x 50 mm		2001.4825
Himalayan salt brick: Type 2, front side broken	200 x 100 x 50 mm		2001.4826
Sauna robe		Size S in white	94.4360
		Size M in white	94.4361
		Size L in white	94.4362
		Size XL in white	94.4363
		Size XXL in white	94.4364
Sauna towel	700 x 2000 mm	White	94.4359

## :: SAUNA ACCESSORIES



### Climate station

- Sauna thermometer and sauna hygrometer Ø 100 mm.
- Thermometer measuring range: 0 - 120 °C.
- Hygrometer measuring range: 0 - 100 % Relative air humidity.



### Sauna set, stainless steel

- Sophisticated sauna set made of stainless steel.
- Consisting of pouring pail 4.5 l capacity, made of stainless steel with wooden handle and scoop made of stainless steel with wooden handle.
- Packed in a carrying box.



### Sauna set, transparent

- Pouring pail approx. 5 l and scoop made out of transparent polycarbonate. Heat-resistant up to approx. 80 °C.
- Wooden handles made of aspen / thermally treated.



### Backrest

- Ergonomic backrest made of wood (poplar).

Product name	Outer dimensions (H x W x D)	Art. No.
Climate station: Thermometer and hygrometer	Ø 160 mm	94.4118
Sauna set, stainless steel		94.4122
Sauna set, transparent		94.5243
Backrest	520 x 400 x 70 mm	94.4121

## :: IMPORTANT NOTES

	Outer dimensions HWD in mm	VDE-tested	Electronic temperature detection	Heater start adjustable 0-24 hours	Heating time maximum in hours	Cabin lighting	Dimmability of cabin lighting	Display of day time / preselected time	Temperature range in sauna operation in °C	Temperature range in humidity operation in °C	LCD multifunction display (illuminated)	Fan switch	Continuous switching for fan operation	2-sensor system (optional)	Humidity sensor as option	Subsequent drying program	Data retention during power loss (up to 24 hours)	Expansion of switching load with power switchgear	Coloured light optionally upgradable	Remote start (GSM or cable) upgradable	User profiles	for humidity operation	Maximum switching capacity in kW
EMOTEC® DC 9000	240 x 230 x 70	■	■	■	6/12/∞	■	■	■	30-110		■	■	■	■	■	■	■	■	■	■	■	■	9
EMOTEC® HCS 9003	240 x 230 x 70	■	■	■	6/12/∞	■	■	■	30-110	30-70	■	■	■	■	■	■	■	■	■	■	■	■	9
EmoTouch II AF/PB	170 x 175 x 40	■	■	■	6/12/∞	■	■	■	30-110	30-70	■	■	■	■	■	■	■	■	■	■	■	■	9
InfraTouch I AF	130 x 100 x 20	■	■	■	6/12	■	■	■	70-110	30-80	■	■	■			■	■	■	■	■	■	■	3.3
ECON D1	220 x 250 x 60	■	■		6	■		■	30-115		■						■						9
ECON H1		■	■		6	■		■	40-115	30-70	■	■				■	■					■	9
ECON D2		■	■	■	6/12	■		■	30-115		■						■	■					9
ECON H2		■	■	■	6/12	■		■	40-115	30-70	■	■				■	■	■				■	9
Humidity sensor F2		■	Additional to control unit EMOTEC® HCS 9003																				
EMOTEC® L 09	240 x 230 x 70	■	Power switchgear: switch load 9 kW (without control unit)																				9
EMOTEC® L 09R	240 x 230 x 70	■	Power switchgear: switch load 9 kW (without control unit)																				9
Power switchgear 18	450 x 300 x 142	■	Power switchgear: switch load 18 kW (without control unit)																				18
Power switchgear 18 H		■	Power switchgear: same as power switchgear 18, but for evaporator power up to 4 kW																				18
Power switchgear 36	450 x 300 x 142	■	Power switchgear: switch load 36 kW (without control unit)																				36
Power switchgear 36 H		■	Power switchgear: same as power switchgear 36, but for evaporator power up to 4 kW																				36

### Required heating capacity and connected load

Heating capacity in kW	Cabin size in m³ (basis for manufacturing according to RAL for cabins inside buildings)														Minimum cross section of power cable in mm²		
	3-5	4-6	6-8	7-10	9-14	14-18	18-25	24-30	24-34	35-40	40-50	50-65	65-75		Connection to 400 V 3N AC	Connection to 230 V AC	Fuse A
3.0	■															3 x 1.5²	1 x 16
4.5		■													5 x 2.5²		3 x 16
6.0			■														
7.5				■													
9.0					■												
12.0						■									5 x 4²		3 x 25
15.0							■										
18.0								■							5 x 6²		3 x 35
21.0									■								
24.0										■					5 x 10²		3 x 50
27.0											■						
30.0												■			minimum 5 x 10²		3 x 63
36.0													■				





Subject to technical and optical changes. We shall not be held liable for printing errors.

**EOS SAUNATECHNIK GmbH**

Adolf-Weiß-Straße 43  
35759 Driedorf-Mademühlen  
Germany

Tel.: +49 (0)2775 82-0  
Fax: +49 (0)2775 82-431

info@eos-sauna.de  
www.eos-sauna.de